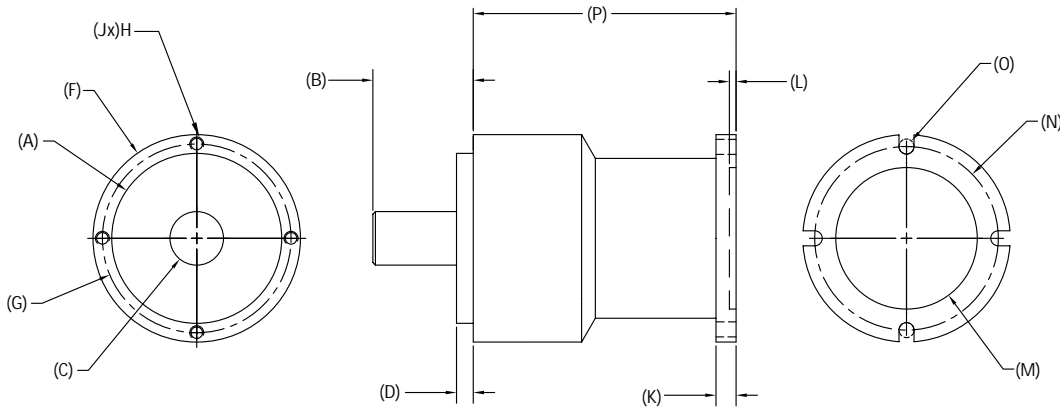


# PT SERIES: POWERTUBE PLANETARY GEARHEADS

## SINGLE, DOUBLE, TRIPLE STAGE PRECISION GEARHEADS



PART NUMBER	A PILOT DIAMETER (in.)	B SHAFT LENGTH (in.)	C SHAFT DIAMETER (in.)	D PILOT LENGTH (in.)	F HOUSING DIAMETER (in.)	G BOLT HOLE CIRCLE (in.)	H THREAD (in.)
023PTX	1.998/2.000	1.18	.6299/.6294	.197	2.441	2.220	8-32 UNC

PART NUMBER	J THREAD DEPTH (in.)	K FLANGE THICKNESS (in.)	L PILOT DEPTH (in.)	M PILOT DIAMETER (in.)	N BOLT HOLE CIRCLE (in.)	O BOLT HOLE DIAMETER (in.)	RADIAL / AXIAL SHAFT LOADING (LBS.)
023PTX	.312	.236	.079	1.665	2.160	.177	250 / 250

ALL SPECIFICATIONS SUBJECT TO CHANGE.

MODEL	RATIO	TORQUE RATING		INERTIA		BACKLASH	GEARHEAD	P
		T <sub>c</sub> IN LBS.	T <sub>PEAK</sub> IN LBS.	INPUT PINION OZ IN SEC <sup>2</sup>	GEARHEAD OZ IN SEC <sup>2</sup>	STD/ LOW ARC MINUTES	WEIGHT LBS.	GEARHEAD LENGTH
023PTX	3:1	285	396	1.194E-03	4.866E-04	10 / 7	2.3	2.12
023PTX	4:1	264	366	9.502E-04	3.113E-04	10 / 7	2.3	2.12
023PTX	5:1	247	342	9.044E-04	2.064E-04	10 / 7	2.3	2.12
023PTX	5.5:1	238	330	8.969E-04	1.746E-04	10 / 7	2.3	2.12
023PTX	7:1	197	274	8.880E-04	1.100E-04	10 / 7	2.3	2.12
023PTX	10:1	119	179	8.846E-04	5.471E-05	10 / 7	2.3	2.12
023PTX	15:1	303	421	9.044E-04	2.355E-04	14 / 9	3.3	3.09
023PTX	16:1	282	391	9.502E-04	3.287E-04	14 / 9	3.3	3.09
023PTX	20:1	284	394	9.044E-04	2.175E-04	14 / 9	3.3	3.09
023PTX	22:1	285	396	8.969E-04	1.838E-04	14 / 9	3.3	3.09
023PTX	25:1	265	367	9.044E-04	2.110E-04	14 / 9	3.3	3.09
023PTX	28:1	288	400	8.880E-04	1.157E-04	14 / 9	3.3	3.09
023PTX	30:1	312	435	8.846E-04	6.200E-05	14 / 9	3.3	3.09
023PTX	40:1	291	405	8.846E-04	5.749E-05	14 / 9	3.3	3.09
023PTX	49:1	213	295	8.880E-04	1.098E-04	14 / 9	3.3	3.09
023PTX	50:1	269	374	8.846E-04	5.586E-05	14 / 9	3.3	3.09
023PTX	55:1	260	362	8.846E-04	5.543E-05	14 / 9	3.3	3.09
023PTX	70:1	215	298	8.846E-04	5.460E-05	14 / 9	3.3	3.09
023PTX	100:1	110	164	8.846E-04	5.393E-05	14 / 9	3.3	3.09
023PTX	160:1	303	420	8.846E-04	5.723E-05	18 / 11	4.3	4.06
023PTX	280:1	307	427	8.846E-04	5.449E-05	18 / 11	4.3	4.06
023PTX	400:1	305	406	8.846E-04	5.388E-05	18 / 11	4.3	4.06
023PTX	550:1	276	384	8.846E-04	5.386E-05	18 / 11	4.3	4.06
023PTX	700:1	226	315	8.846E-04	5.385E-05	18 / 11	4.3	4.06

AVAILABLE RATIOS	EFFICIENCY	SPECIFICATIONS
SINGLE STAGE : 3:1 / 4:1 / 5:1 / 5.5:1 / 7:1 / 10:1	90%	Input RPM: 5000 Max.
DOUBLE STAGE: 15:1/16:1/20:1/22:1/25:1/28:1/30:1/40:1/49:1/50:1/55:1/70:1/100:1	85%	Operating Temperature Range -60°F to +255°F
TRIPLE STAGE: 160:1 / 280:1 / 400:1 / 550:1 / 700:1 OTHER RATIOS AVAILABLE	80%	Motor Mounting Hardware Supplied