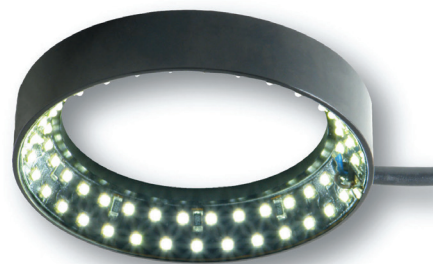





Product Highlights

- Low-angle illumination
- Used to detect variations and edges on a variety of surfaces
- Available in four sizes: 50, 100, 180, and 280mm

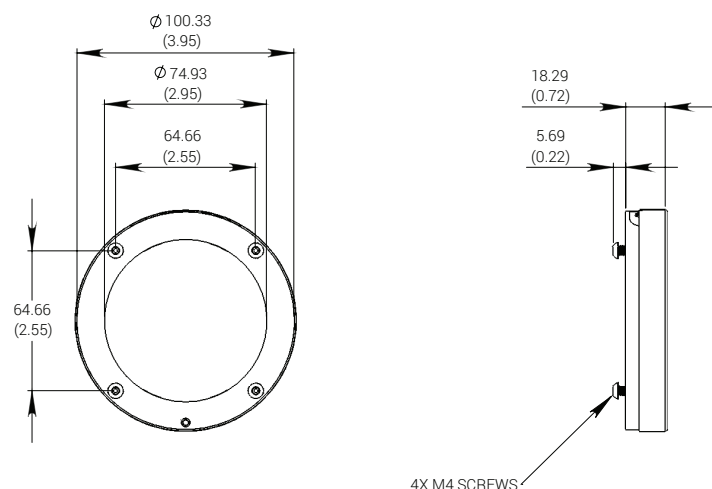


General Specifications

Electrical Specifications	Part Number	Color	24v Current (A)	All Other Controls (A Max)	Weight
	DF197-050	455, 530, WHI	0.2	0.16	59.9 g (2.11 oz)
		625	0.2	0.09	
	DF197-100	455, 530, WHI	0.5	0.38	126.1 g (4.45 oz)
		625	0.5	0.23	
	DF197-180	455, 530, WHI	1.0	0.77	241.3 g (8.51 oz)
		625	1.0	0.46	
	DF197-280	455, 530, WHI	1.25	0.97	386.5 g (13.63 oz)
		625	1.25	0.58	
	Normal Operating Temperature	0 - 60°C			
Weight (Kg)	Varies by size				
Standard Cable Information	Up to 2 meters (80") long - 105°C rated PVC jacket, foil shield with drain.				
Photobiological Risk Factor IEC 62471	Group 1 (Low-Risk) Applicable Wavelengths: 455, 530, 625, WHI				
Compliance	  				
IP Rating	Not Rated				
Lumen Maintenance	L70 = 50,000 hours				

Mechanical Specifications

DF197-100 Shown Below



DIMENSIONS ARE IN MILLIMETERS (INCHES)

Part Number	Outer Diameter	Inner Diameter	Housing Thickness
DF197-050	50.0 (1.97)	24.6 (0.97)	19.1 (0.75)
DF197-100	100.3 (3.95)	74.9 (2.95)	18.3 (0.72)
DF197-180	180.0 (7.09)	154.6 (6.09)	18.3 (0.72)
DF197-280	280.0 (11.02)	254.6 (10.02)	18.3 (0.72)

For complete dimensions of all sizes please refer to the downloads tab on the DF197 product page on our website.

Part Number Key

Model	—	Size in mm	Spectral Wavelength	Connector/Control	—	Alternative Connector
DF197	—	XXX	XXX	XX	—	XXX
DF197		050	(royal blue) 455	C1		M12 ¹
		100	(green) 530	C5		
		180	(red orange) 625	IC		
		280	(white) WHI	I3		
				I3S		
				24 ²		
Ex: DF197-100WHI3 DF197-180625C1			¹ Available with IC, I3, I3S and 24v options only ² The 24v version will have a lower output intensity by ~10-15% and operate at a temp ~10-15% higher than other options			

Stock Product: shipped within 3 days
DF197-100WHI3

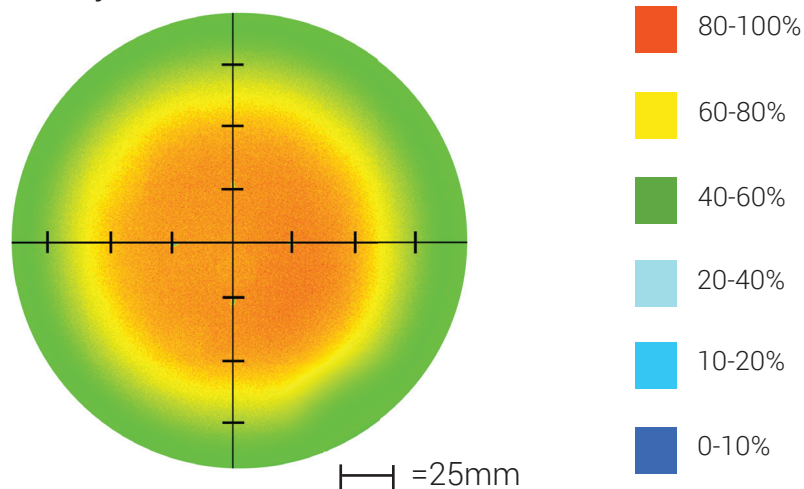
Build to Order: shipped within 2 weeks

Connector | Control Options

C1 Connector	C5 Connector	ICS 2 (IC)	ICS 3 (I3)	ICS 3S (I3S)	24
For use with: DCS Series Controllers	For use with: Pulsar 320 Strobe Controller.	Continuous in-line controller Powered with: 24V power supply	Combination strobe/continuous in-line controller Powered with: 24V power supply	Default-OFF strobe/continuous in-line controller Powered with: 24V power supply	Flying/tinned leads Powered with: 24V power supply

Optical Performance

Intensity Distribution

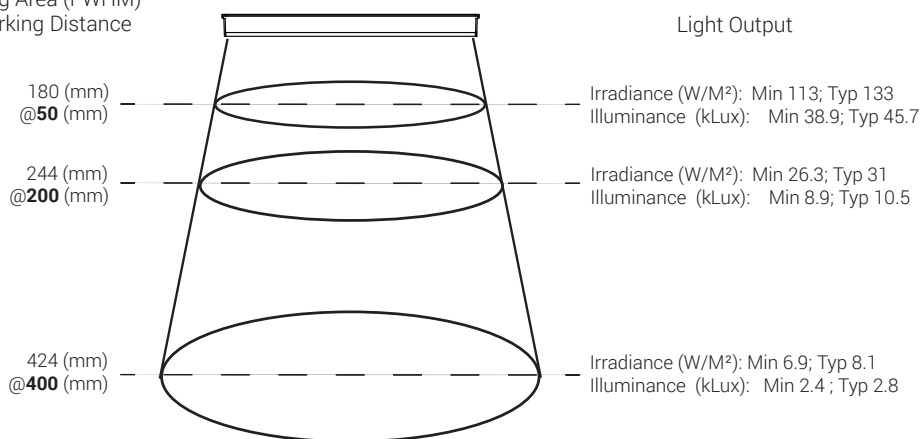


Optical measurement taken using DF197-180WHI3 @ 200 mm

Area of Illuminance & Intensity for DF197-180WHI

Working Area (FWHM)
@ Working Distance

Light Output



Area of Illuminance & Intensity for All DF197-WHI

Part Number	Working Distance (mm)	Irradiance (klux)	Illuminance (W/m2)	FWHM Diameter (mm)
DF197-050	25	275	84.3	43.2
	75	44.9	14.3	83.8
	100	25	8.1	114.3
DF197-100	50	205	72	94.0
	150	29	9.5	203.2
	300	7.1	2.4	337.8
DF197-180	50	133	45.7	180.3
	200	31	10.5	243.8
	400	8.1	2.8	424.2
DF197-280	100	73	26	287.0
	200	41.5	14.5	304.8
	400	13.2	4.6	490.2

Operation and Wiring

ICS 2 (IC)

Pin (M12)	Function	Wire Color
1	+24 VDC	Brown
2	GHI	White
3	DCGND	Blue
4	GLO	Black

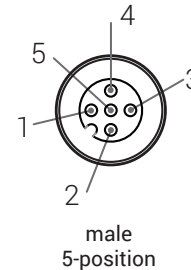
ICS 3 (I3 and I3S)

Pin (M12)	Function	Wire Color
1	+24 VDC	Brown
2	Reserved	White
3	GND	Blue
4	PNP/Active High Trigger	Black
5	0-10 VDC Analog Control	Gray

24 Volt

Pin (M12)	Function	Wire Color
1	+24 VDC	Brown
2	N/A	White
3	GND	Blue
4	N/A	Black

Optional M12 Pinout



Warranty Information

Every Advanced illumination, Inc. (Ai) product is thoroughly inspected and tested before leaving the factory. Products are warranted to be free of defects in workmanship and materials for a period of two years from the original date of purchase. Should a defect develop during this period, please contact Ai Customer Service or your Ai distributor for a Return Merchandise Authorization (RMA), and return the complete product, freight prepaid, to Ai. If a defect is found, Ai will - at our discretion - repair or replace the product without charge. Ai claims no liability for any implied warranties, including "merchantability" and "fitness for a specific purpose."

Electromagnetic Compatibility

This product was tested and complies with the regulatory requirements and limits for electromagnetic compatibility (EMC) as stated in the product specifications. These requirements and limits are designed to provide reasonable protection against harmful interference only when the product is operated in its intended industrial electromagnetic environment. To minimize the potential for electromagnetic interference or unacceptable performance degradation, install and use this product in strict accordance with the instructions in the product documentation.

Customer Service

For information on existing orders, or to make an order adjustment, contact us Monday through Friday 8:00 am to 5:00 pm, ET or send an email to orders@advill.com.

Company Information

Advanced Illumination

440 State Garage Road, Rochester VT. 05767

Phone: 802.767.3830

Fax: 802.767.3831

Email: info@advancedillumination.com

Web: advancedillumination.com

© 2015 Advanced Illumination Inc. All rights reserved