

SM23405D	
Continuous Torque	4.88 in-lb
	78 oz-in
	0.55 N-m
Peak Torque	8.04 in-lb
	129 oz-in
	0.91 N-m
Nominal Continuous Power	253 Watt
No Load Speed	5,300 RPM
Max. Continuous Current* @ 4500 RPM	6.76 Amps
Peak Power @ 4000 RPM	345 Watts
Voltage Constant	9.612 V/kRPM
Inductance	0.49 mH
Encoder Resolution	4,000 Counts/Rev
Rotor Inertia	0.00439 oz-in-sec ²
	3.100 10 ⁻⁵ Kg-m ²
Weight	2.8 lb
	1.27 kg
Shaft Diameter	0.250 in
	6.35 mm
Shaft, Radial Load	7 lb
	3.18 kg
Shaft, Axial Thrust Load	3 lb
	1.36 kg
DeviceNet Available	Yes
PROFIBUS Available	
CANopen Available	Yes

*Default voltage is 48V. See graphs for additional voltages.

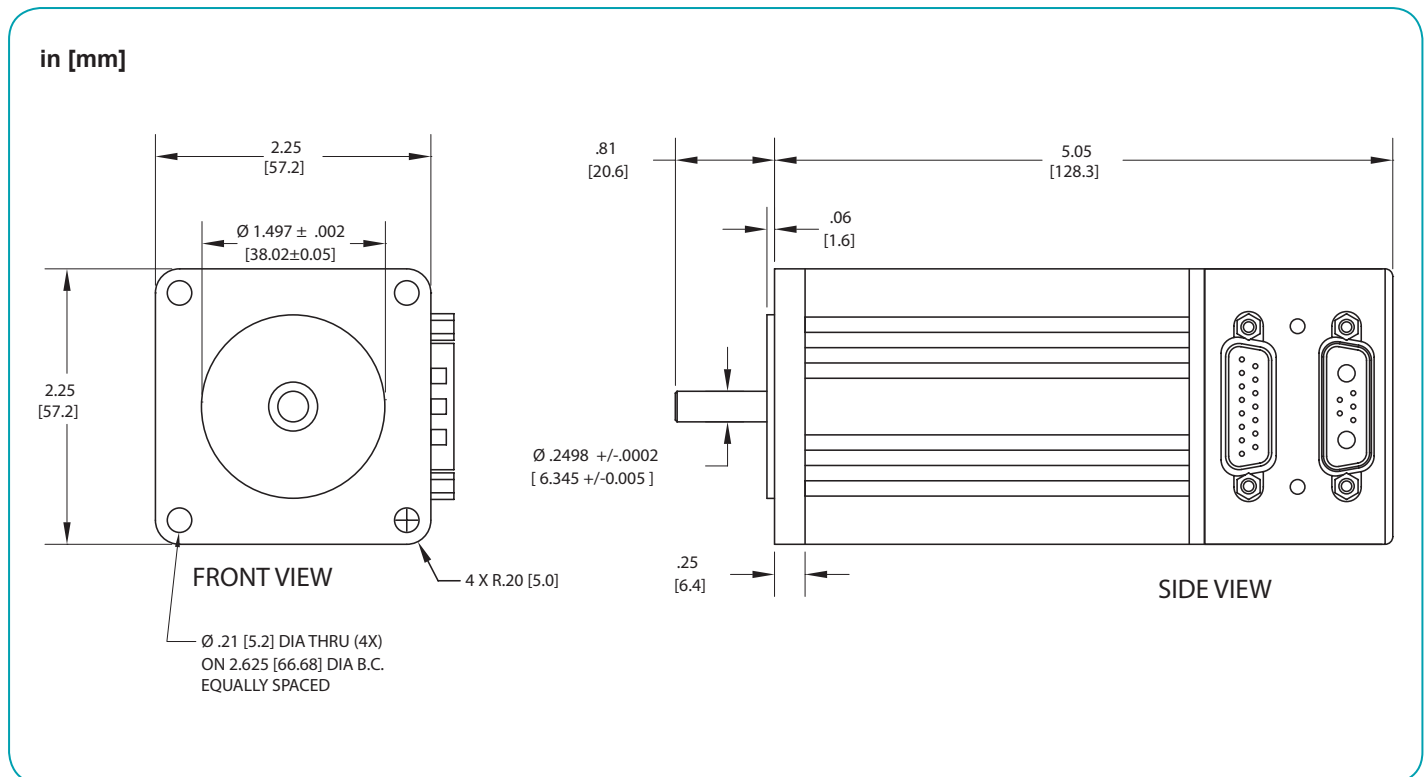


Operating temperature range: 0°C–85°C
Storage temperature range: -10°C–85°C, noncondensing

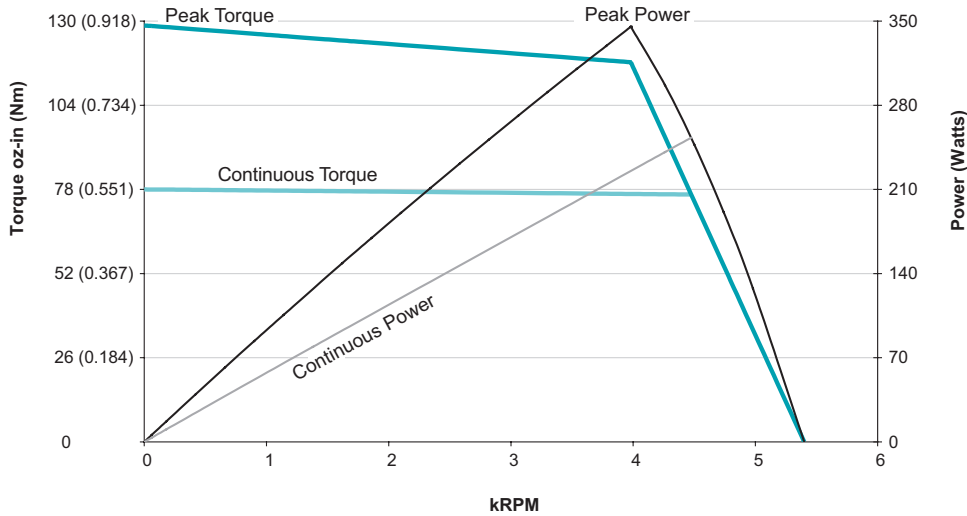
NOTE: Motor specifications are subject to changes without notice. Consult website and factory for latest data.



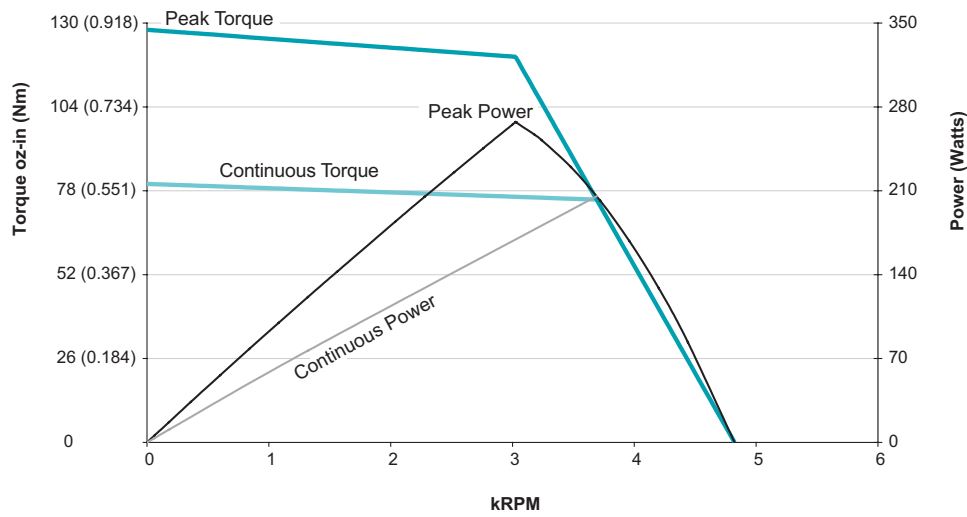
Moog Animatics SmartMotor SM23405D (No Options) CAD Drawing



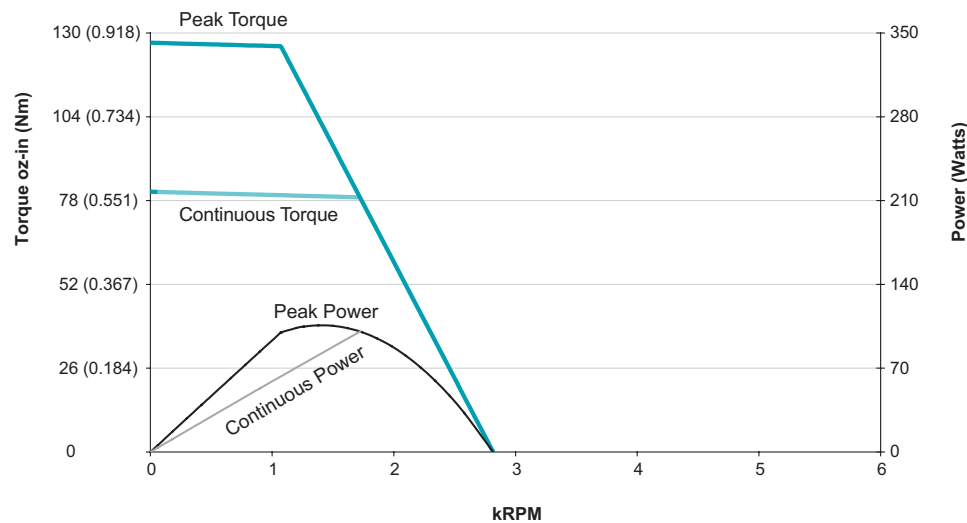
OVERVIEW
SOFTWARE
D-STYLE MOTORS
D-STYLE CONNECTIVITY
PERIPHERALS
M-STYLE MOTORS
M-STYLE CONNECTIVITY
LINEAR SYSTEMS
POWER SUPPLIES & SHUNTS
GEAR HEADS
APPENDIX



SM23405D
at 48 VDC
at rise to 85°C



SM23405D
at 42 VDC
at rise to 85°C



SM23405D
at 24 VDC
at rise to 85°C

All torque curves based on 25°C ambient.
Motors were operated using MDT (Trapezoidal Drive Mode) Commutation.
For ambient temperatures above 25°C, Continuous Torque must be linearly derated to 0% at 85°C.