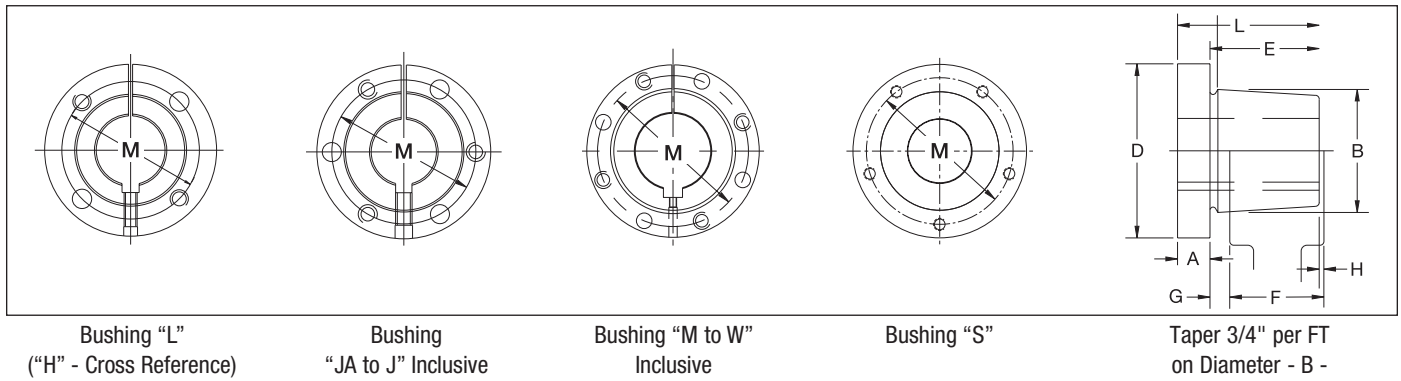


“QD” Bushing



Features: All Bushings up to sizes M, and those with a shallow keyseat, are manufactured in DUCTILE iron, a stronger material offering numerous advantages. All sizes have a set screw over the keyway to secure the key, which is advantageous in vertical applications. 100% interchangeable with licensed manufacturer’s products. Available in inches & metric sizes. Available “Short” for weld-on hubs. Full, not partial split.

How to order: Example: SFX1-1/16; SF=Bushing Size. X1-1/16=Bore Size (1-1/16") Inch bore sizes are designated with the whole inch followed by the fraction. For example, a 1.5" diameter bore would be 1-1/2. Metric bore sizes are designated with “MM” after the metric dimension (X 25MM).



Dimensions

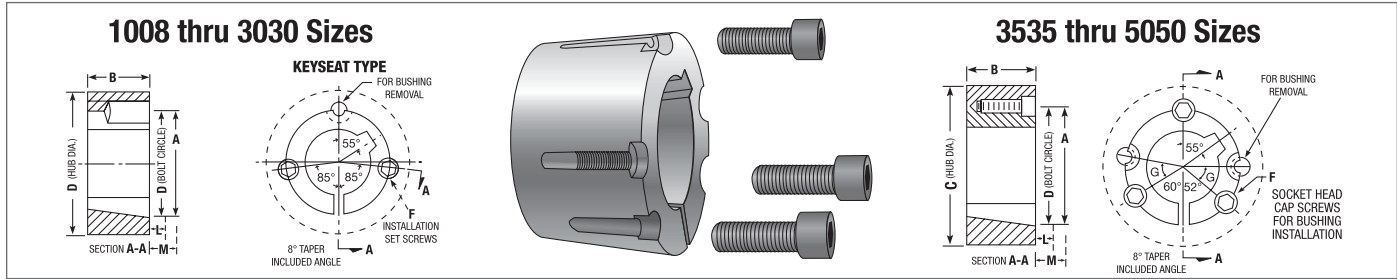
| Bushing Size | List Price | Mult. Sym. | Dimensions - Inches | | | | | | | | | Cap Screws Required NC Grade 5 | Set Screw Dimensions | Bore Range | | Approx. Wt. (lbs) |
|--------------|------------|------------|---------------------|---------|---------|---------|--------|-------|------|---------|---------|-----------------------------------|----------------------|------------|---------|-------------------|
| | | | A | B | D | E | F | G | H | L | Min. | | | Max. | | |
| L | 9.00 | QDB20 | 11/32 | 1 5/8 | 2 1/2 | 1 | 29/32 | 3/16 | 3/32 | 1 11/32 | 2 | 2=1/4X7/8 | 10-24 UNC x 1/4" | 3/8 | 1 1/2 | 0.7 |
| JA | 10.90 | QDB01 | 5/16 | 1 3/8 | 2 | 11/16 | 5/8 | 13/64 | 9/64 | 1 | 1 21/32 | 3=10-24X1 | 10-24 UNC x 1/4" | 1/2 | 1 1/4 | 0.4 |
| SH | 14.90 | QDB01 | 3/8 | 1 7/8 | 2 11/16 | 7/8 | 3/4 | 1/4 | 1/8 | 1 1/4 | 2 1/4 | 3=1/4X1 3/8 | 1/4-20 UNC x 1/4" | 1/2 | 1 11/16 | 0.9 |
| SDS | 17.30 | QDB01 | 7/16 | 2 3/16 | 3 3/16 | 7/8 | 3/4 | 1/4 | 1/8 | 1 5/16 | 2 11/16 | 3=1/4X1 3/8 | 1/4-20 UNC x 1/4" | 1/2 | 2 | 1.3 |
| SD | 20.80 | QDB01 | 7/16 | 2 3/16 | 3 3/16 | 1 3/8 | 1 1/4 | 1/4 | 1/8 | 1 13/16 | 2 11/16 | 3=1/4X1 7/8 | 1/4-20 UNC x 1/4" | 1/2 | 2 | 1.6 |
| SK | 26.80 | QDB01 | 1/2 | 2 13/16 | 3 7/8 | 1 3/8 | 1 1/4 | 5/16 | 3/16 | 1 7/8 | 3 5/16 | 3=5/16X2 | 1/4-20 UNC x 1/4" | 1/2 | 2 5/8 | 2.7 |
| SF | 33.00 | QDB01 | 1/2 | 3 1/8 | 4 5/8 | 1 1/2 | 1 1/4 | 5/16 | 1/16 | 2 | 3 7/8 | 3=3/8X2 | 5/16-18 UNC x 3/8" | 1/2 | 2 15/16 | 3.9 |
| E | 69.20 | QDB01 | 3/4 | 3 27/32 | 6 | 1 7/8 | 1 5/8 | 5/16 | 1/16 | 2 5/8 | 5 | 3=1/2X2 3/4 | 3/8-16 UNC x 3/8" | 7/8 | 3 1/2 | 8.5 |
| F | 128.00 | QDB01 | 13/16 | 4 7/16 | 6 5/8 | 2 13/16 | 2 1/2 | 13/32 | 3/32 | 3 5/8 | 5 5/8 | 3=9/16X3 5/8 | 3/8-16 UNC x 3/8" | 1 | 4 | 13.3 |
| J | 160.00 | QDB01 | 1 | 5 5/32 | 7 1/4 | 3 1/2 | 3 3/16 | 13/32 | 3/32 | 4 1/2 | 6 1/4 | 3=5/8X4 1/2 | 3/8-16 UNC x 3/8" | 1 7/16 | 4 1/2 | 20.8 |
| M | 320.00 | QDB01 | 1 1/4 | 6 1/2 | 9 1/8 | 5 1/2 | 5 3/16 | 13/32 | 3/32 | 6 3/4 | 7 7/8 | 4=3/4X7 | 3/8-16 UNC x 1/2" | 2 | 5 1/2 | 48.5 |
| N | 560.00 | QDB03 | 1 1/2 | 7 | 10 | 6 5/8 | 6 1/4 | 9/16 | 3/16 | 8 1/8 | 8 1/2 | 4=7/8X8 | 1/2-13 UNC x 5/8" | 2 3/4 | 6 | 62.1 |
| P | 840.00 | QDB03 | 1 3/4 | 8 1/4 | 11 3/4 | 7 5/8 | 7 1/4 | 5/8 | 1/4 | 9 3/8 | 10 | 4=1X9 1/2 | 5/8-11 UNC x 1 1/4" | 2 15/16 | 7 | 108.8 |
| W | 1480.00 | QDB03 | 2 | 10 7/16 | 15 | 9 3/8 | 9 | 5/8 | 1/4 | 11 3/8 | 12 3/4 | 4=1 1/8X11 1/2 | 1-8 UNC x 1 1/2" | 4 1/4 | 8-1/2 | 218.9 |
| S | 3480.00 | QDB03 | 3 1/4 | 12 1/8 | 17 3/4 | 12 1/2 | 12 | 13/16 | 5/16 | 15 3/4 | 15 | 5=1 1/4X15 1/2 | 1 1/4-7 UNC x 2" | 5 1/2 | 10 | 382.0 |
| SX5** | 3132.00 | QDB03 | 3 1/4 | 12 1/8 | 17 3/4 | 12 1/2 | 12 | 13/16 | 5/16 | 15 3/4 | 15 | 5=1 1/4X15 1/2 | 1 1/4-7 UNC x 2" | - | - | 382.0 |
| SX7-1/2** | 3132.00 | QDB03 | 3 1/4 | 12 1/8 | 17 3/4 | 12 1/2 | 12 | 13/16 | 5/16 | 15 3/4 | 15 | 5=1 1/4X15 1/2 | 1 1/4-7 UNC x 2" | - | - | 382.0 |
| Z | On request | QDB03 | 2 5/8 | 16 | 22 | 9 3/8 | 9 | 3/4 | 3/8 | 12 | 19 | 5=1 1/4X12 | 1-8 UNC X 1-1/2" | 7 | 12 | 435.0 |

** RB = Rough bore
Note: Standard millimeter bores also available.
Note: Approx. weight in lbs. for an average size bore.

Taper-Lock Bushings

Features: Available in inches & millimeter bores. Flush mounting. Sizes 1008-5050.

How to order: Example: 2012X1-3/8; 2012 = Bushing Size. The Taper-Lock bushing size is defined by 4 digits representing two numbers. The first two digits represent the maximum bore size and the second two digits represent the bushing length. For example, product number 1008 has a max. bore of 1.0" and a total length of 0.8" X 1-3/8 = Bore Size (1-3/8"). Inch bore sizes are designated with the whole inch followed by the fraction. For example, a 1.5" diameter bore would be 1-1/2. Metric bore sizes are designated with "MM" after the metric dimension (X 25MM).



Dimensions for 1008 thru 5050

| Bushing Size | List Price | Mult. Sym. | Rating • Torque Capacity (lb - in.) | Hub Diam. Ref. | | | | Installation Screw + | | G | L * | | M * | | Bore Range | | Approx. Wt. (lbs) |
|--------------|------------|------------|-------------------------------------|----------------|-------|--------|---------|----------------------|-------------|----|-------------|-------------|-------------|-------------|------------|---------|-------------------|
| | | | | A | B | C | D | Qty | Size | | Std Hex Key | Short Key € | Std Hex Key | Short Key € | Min. | Max. | |
| 1008 | 11.60 | TLB23 | 1,200 | 1 3/8 | 7/8 | 2 3/16 | 1 21/64 | 2 | 1/4 x 1/2 | | 1 1/8 | 5/8 | 1 1/4 | 3/4 | 1/2 | 1 | 0.2 |
| 1108 | 12.00 | TLB23 | 1,300 | 1 1/2 | 7/8 | 2 5/16 | 1 29/64 | 2 | 1/4 x 1/2 | | 1 1/8 | 5/8 | 1 1/4 | 3/4 | 1/2 | 1 1/8 | 0.2 |
| 1210 | 12.80 | TLB23 | 3,600 | 1 7/8 | 1 | 3 1/4 | 1 3/4 | 2 | 3/8 x 5/8 | | 1 3/8 | 13/16 | 1 5/8 | 1 1/16 | 1/2 | 1 1/4 | 0.5 |
| 1215 | 14.00 | TLB23 | 3,550 | 1 7/8 | 1 1/2 | 2 7/8 | 1 3/4 | 2 | 3/8 x 5/8 | | 1 3/8 | 13/16 | 1 5/8 | 1 1/16 | 1/2 | 1 1/4 | 0.3 |
| 1310 | 14.40 | TLB23 | 3,850 | 2 | 1 | 3 3/8 | 1 7/8 | 2 | 3/8 x 5/8 | | 1 3/8 | 13/16 | 1 5/8 | 1 1/16 | 1/2 | 1 7/16 | 0.6 |
| 1610 | 14.80 | TLB23 | 4,300 | 2 1/4 | 1 | 3 5/8 | 2 1/8 | 2 | 3/8 x 5/8 | | 1 3/8 | 13/16 | 1 5/8 | 1 1/16 | 1/2 | 1 11/16 | 0.7 |
| 1615 | 15.40 | TLB23 | 4,300 | 2 1/4 | 1 1/2 | 3 1/4 | 2 1/8 | 2 | 3/8 x 5/8 | | 1 3/8 | 1 3/16 | 1 5/8 | 1 11/16 | 1/2 | 1 11/16 | 1.0 |
| 2012 | 20.00 | TLB23 | 7,150 | 2 3/4 | 1 1/4 | 4 3/8 | 2 5/8 | 2 | 7/16 x 7/8 | | 1 9/16 | 15/16 | 2 | 1 3/8 | 1/2 | 2 1/8 | 1.4 |
| 2517 | 24.60 | TLB23 | 11,600 | 3 3/8 | 1 3/4 | 4 7/8 | 3 1/4 | 2 | 1/2 x 1 | | 1 5/8 | 1 | 2 1/4 | 1 5/8 | 1/2 | 2 11/16 | 3.1 |
| 2525 | 36.40 | TLB23 | 11,300 | 3 3/8 | 2 1/2 | 4 1/2 | 3 1/4 | 2 | 1/2 x 1 | | 1 5/8 | 1 | 2 1/4 | 1 5/8 | 3/4 | 2 1/2 | 3.5 |
| 3020 | 37.00 | TLB23 | 24,000 | 4 1/4 | 2 | 6 1/4 | 4 | 2 | 5/8 x 1 1/4 | | 1 13/16 | 1 3/16 | 2 11/16 | 2 1/16 | 7/8 | 3 1/4 | 5.0 |
| 3030 | 54.00 | TLB23 | 24,000 | 4 1/4 | 3 | 5 3/4 | 4 | 2 | 5/8 x 1 1/4 | | 1 13/16 | 1 3/16 | 2 11/16 | 2 1/16 | 15/16 | 3 1/4 | 7.4 |
| 3535 | 76.00 | TLB23 | 44,800 | 5 | 3 1/2 | 7 | 4 27/32 | 3 | 1/2 x 1 1/2 | 39 | 2 | 1 5/16 | 3 3/8 | 2 11/16 | 1 3/16 | 3 15/16 | 9.8 |
| 4040 | 122.00 | TLB23 | 77,300 | 5 3/4 | 4 | 8 1/2 | 5 35/64 | 3 | 5/8 x 1 3/4 | 40 | 2 3/8 | 1 5/8 | 4 1/8 | 3 3/8 | 1 7/16 | 4 7/16 | 15.4 |
| 4545 | 152.00 | TLB23 | 110,000 | 6 3/8 | 4 1/2 | 9 1/2 | 6 1/8 | 3 | 3/4 x 2 | 40 | 2 5/8 | 1 15/16 | 4 3/4 | 4 1/16 | 1 15/16 | 4 15/16 | 21.0 |
| 5050 | 246.00 | TLB23 | 126,000 | 7 | 5 | 10 1/2 | 6 23/32 | 3 | 7/8 x 2 1/4 | 37 | 2 13/16 | 2 5/16 | 5 1/4 | 4 13/16 | 2 7/16 | 5 | 29.0 |

+ Use in position shown in drawing above for tightening bushing on shaft. When loosening bushing, remove screws and use all except one in the other holes.

* Space required to remove bushing using jackscrews - no puller required.

€ Standard hex key cut to minimum useable length.

• Peak torque loads must not exceed torque capacity rating shown. Capacity values shown are for light starting and steady running conditions. For more severe duty, divide torque capacity by service factor referred to in Baldor•Maska® Product Catalog.

Note: Approx. weight in lbs. for an average size bore.