

Spannsatz Locking Device

Die empfohlenen Bearbeitungstoleranzen für die Druckflächen sind:

Welle h 8 Nabe H 8

Recommended machining tolerances:

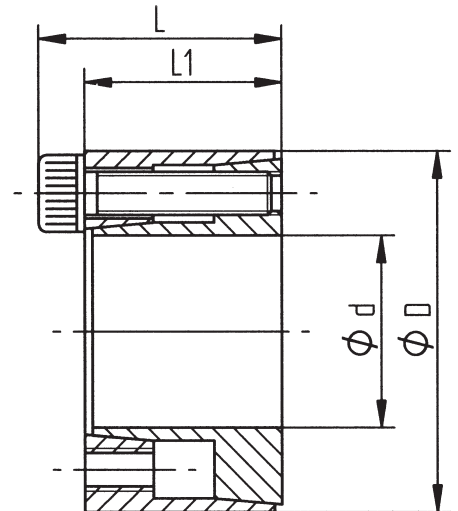
Shaft h 8 Hub H 8



BESTELLBEISPIEL: ORDER CODE:

Bei einer Welle mit \varnothing 15 mm und max. Drehmoment 40 Nm
For a shaft with $d=15$ mm and a transmissible torque value lower than or equal to 40 Nm

KBS 61 - 15 x 28



Innen/ Außen Ø Inner/ Outer Ø	Dreh- moment Torque T Nm	Abmessungen Dimensions		Flächenpressung an Surface pressure on		Spannschrauben Screws			Gewicht Mass kg
		L mm	L 1 mm	Welle Shaft Pw N/mm ²	Nabe Hub Pn N/mm ²	n St.	Size DIN 912	TA Nm	
5x16	6	13.5	11	150	55	3	M2.5x10	1.2	0.012
6x16	6	13.5	11	150	55	3	M2.5x10	1.2	0.012
6.35x16	6	13.5	11	140	55	3	M2.5x10	1.2	0.012
7x17	8	13.5	11	125	55	3	M2.5x10	1.2	0.013
8x18	10	13.5	11	110	50	3	M2.5x10	1.2	0.015
9x20	15	15.5	13	120	55	4	M2.5x12	1.2	0.020
9.53x20	15	15.5	13	110	55	4	M2.5x12	1.2	0.020
10x20	15	15.5	13	110	55	4	M2.5x12	1.2	0.019
11x22	18	15.5	13	100	50	4	M2.5x12	1.2	0.024
12x22	20	15.5	13	90	50	4	M2.5x12	1.2	0.022
14x26	35	20	17	105	55	4	M3x16	2.1	0.039
15x28	40	20	17	100	50	4	M3x16	2.1	0.044
16x32	70	21	17	130	65	4	M4x16	4.9	0.067
17x35	75	25	21	120	60	4	M4x20	4.9	0.090
18x35	80	25	21	115	60	4	M4x20	4.9	0.087
19x35	85	25	21	110	60	4	M4x20	4.9	0.083
20x38	220	26	21	220	115	6	M5x20	9.7	0.100
22x40	240	26	21	200	110	6	M5x20	9.7	0.110
24x47	380	32	26	220	110	6	M6x25	16.5	0.200
25x47	390	32	26	210	110	6	M6x25	16.5	0.190
25.4x47	390	32	26	210	110	6	M6x25	16.5	0.190
28x50	440	32	26	185	100	6	M6x25	16.5	0.220
30x55	470	32	26	175	95	6	M6x25	16.5	0.270
32x55	500	32	26	165	95	6	M6x25	16.5	0.250
35x60	730	37	31	165	95	8	M6x30	16.5	0.360
38x65	800	37	31	155	90	8	M6x30	16.5	0.430
40x65	840	37	31	145	90	8	M6x30	16.5	0.400
42x75	1200	44	36	165	90	6	M8x35	40	0.670
45x75	1300	44	36	155	90	6	M8x35	40	0.630
48x80	1850	44	36	195	115	8	M8x35	40	0.740
50x80	1900	44	36	185	115	8	M8x35	40	0.700