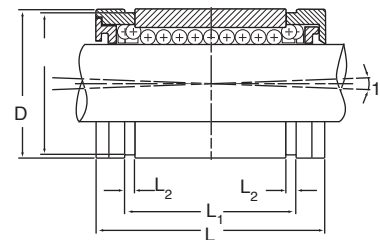


METRIC - CLOSED BEARINGS



- Designed for use on end supported PowerTrax™ HG “M” shafting.
- Bearings are available with or without shaft seals.

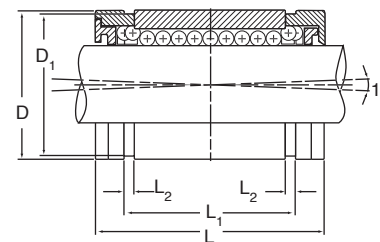


Nominal Shaft Dia.	EXCEL™ Without Seal	EXCEL™ With Seal	No. of Ball Circuits	Housing Bore Dia. D	D ₁	L	L ₁	L ₂	Dynamic Load C (N)		Static Load C ₀ (N)
									Normal	Maximum	
10mm	XLMC10	XLMC10UU	5	19.06/19.03	18	29	21.7	1.35	500	575	390
12mm	XLMC12	XLMC12UU	5	22.08/22.03	21	32	22.7	1.35	650	750	520
16mm	XLMC16	XLMC16UU	5	26.10/26.03	24.9	36	24.7	1.35	800	920	630
20mm	XLMC20	XLMC20UU	5	32.10/32.05	30.3	45	31.3	1.65	1500	1560	1250
25mm	XLMC25	XLMC25UU	5	40.10/40.05	38	58	43.8	1.90	2500	2600	2200
30mm	XLMC30	XLMC30UU	5	47.15/47.05	45.5	68	51.8	1.90	3200	3330	2800
40mm	XLMC40	XLMC40UU	5	62.15/62.05	59	80	60.4	2.20	5500	5720	4900
50mm	XLMC50	XLMC50UU	5	75.20/75.05	72	100	77.4	2.70	8600	8940	7100

METRIC - OPEN BEARINGS



- Designed for use on fully supported shafting.
- Longitudinal section equal to one ball circuit removed for support rail clearance.
- Standard bearing includes shaft seals.



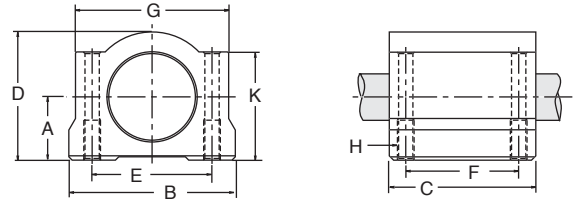
Nominal Shaft Dia.	EXCEL™ With Seal	No. of Ball Circuits	Housing Bore Dia. D	D ₁	L	L ₁	L ₂	E	Dynamic Load C (N)	Static Load C ₀ (N)
12mm	XLMN12UU	4	22.08/22.03	21	32	22.7	1.35	6.5	750	600
16mm	XLMN16UU	4	26.10/26.03	24.9	36	24.7	1.35	9.0	920	730
20mm	XLMN20UU	5	32.10/32.05	30.3	45	31.3	1.65	9.0	1560	1300
25mm	XLMN25UU	5	40.10/40.05	38	58	43.8	1.90	11.5	2600	1290
30mm	XLMN30UU	5	47.15/47.05	45.5	68	51.8	1.90	14.0	3300	2910
40mm	XLMN40UU	5	62.15/62.05	59	80	60.4	2.20	19.5	5720	5100
50mm	XLMN50UU	5	75.20/75.05	72	100	77.4	2.70	22.5	8940	7380

EXCEL™ METRIC SELF-ALIGNING BEARINGS AND PILLOW BLOCKS TECHNICAL DATA

METRIC - CLOSED SINGLE PILLOW BLOCKS



- Contains a single sealed EXCEL™ Bearing.
- Designed for use on end supported PowerTrax™ HG “M” shafting.

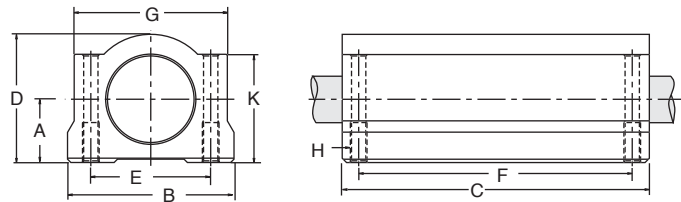


Nominal Shaft Diameter	EXCEL™ Part No.	A ±0.02	B	C	D	E ±0.02	F ±0.02	G	H (Hole)		K	Weight (kg)	LOAD RATING (N)	
									Thread	Hole Dia.			Normal	Maximum
8	XMP-08	11	34	30	22	24	18	32	M4	3.4	18	0.05	500	575
12	XMP-12	15	44	39	30	33	26	41	M5	4.3	24.5	0.09	650	750
16	XMP-16	19	50	44	38.5	36	34	46	M5	4.3	32.5	0.15	800	920
20	XMP-20	21	54	53	41	40	40	52	M6	5.2	35	0.22	1,500	1,560
25	XMP-25	26	76	67	51.5	54	50	68	M8	6.8	41	0.42	2,500	2,600
30	XMP-30	30	78	76	59.5	58	58	72	M8	6.8	49	0.58	3,200	3,300
40	XMP-40	40	102	90	78	80	60	96	M10	8.6	62	1.13	5,500	5,720
50	XMP-50	52	122	110	102	100	80	116	M10	8.6	80	2.12	8,600	8,940

METRIC - CLOSED TWIN PILLOW BLOCKS



- Contains two sealed EXCEL™ Bearings.
- Designed for use on end supported PowerTrax™ HG “M” shafting.



Nominal Shaft Diameter	EXCEL™ Part No.	A ±0.02	B	C	D	E ±0.02	F ±0.02	G	H (Hole)		K	Weight (kg)	LOAD RATING (N)	
									Thread	Hole Dia.			Normal	Maximum
8	TMP-08	11	34	58	22	24	42	32	M4	3.4	18	0.10	1,000	1,150
12	TMP-12	15	44	77	30	33	64	41	M5	4.3	24.5	0.18	1,300	1,040
16	TMP-16	19	50	89	38.5	36	79	46	M5	4.3	32.5	0.30	1,600	1,260
20	TMP-20	21	54	106	41	40	90	52	M6	5.2	35	0.43	3,000	2,500
25	TMP-25	26	76	136	51.5	54	119	68	M8	6.8	41	0.85	5,000	4,400
30	TMP-30	30	78	154	59.5	58	132	72	M8	6.8	49	1.17	6,400	5,600
40	TMP-40	40	102	180	78	80	150	96	M10	8.6	62	2.26	11,000	9,800
50	TMP-50	52	122	230	102	100	200	116	M10	8.6	80	4.38	17,200	14,200



EXCEL™ METRIC HARDENED AND GROUND SHAFTING TECHNICAL DATA

LINEAR SHAFTING						
PART NUMBER	NOMINAL DIAMETER (mm)	TOLERANCES CLASS "M" DIAMETER (μm)	MAXIMUM LENGTH (m)	MINIMUM DEPTH OF HARDNESS (mm)	WEIGHT PER METER OF LENGTH (kg)	WEIGHT PER INCH OF LENGTH (lb.)
5mm	5	+0/-8	3.0	1.0	.15	.009
8mm	8	+0/-9	3.0	1.0	.39	.022
10mm	10	+0/-9	5.5	1.0	.62	.034
12mm	12	+0/-11	5.5	1.0	.89	.050
16mm	16	+0/-11	5.5	1.7	1.57	.088
20mm	20	+0/-13	5.5	1.7	2.46	.14
25mm	25	+0/-13	5.5	2.7	3.84	.22
30mm	30	+0/-13	5.5	2.7	5.53	.31
40mm	40	+0/-16	5.5	2.7	9.83	.55
50mm	50	+0/-16	5.5	3.7	15.36	.86
60mm	60	+0/-19	5.5	3.7	22.12	1.24
80mm	80	+0/-19	5.5	3.7	39.33	2.21