

Step Angle 0.36°

Motor Frame Size 28 mm (1.10 in.), 42 mm (1.65 in.), 60 mm (2.36 in.)

PK Series High-Torque Type



Specifications (RoHS)



Motor Frame Size mm (in.)	Model • Single Shaft/Double Shaft • with TTL Type Encoder • with Differential Type Encoder	Connection Type	Maximum Holding Torque		Rated Current A/phase	Rotor Inertia J		Motor Lead Wires (Pins)	Corresponding Motor & Driver Package CRK Series (Pulse/Built-In Program)
			N-m	oz-in		kg-m ²	oz-in ²		
28 (1.10)	PK523PM□	New Pentagon (Bipolar)	0.042	5.9	0.35	9×10 ⁻⁷	0.049	5	CRK523PM□P CRK523PM□KP
	PK524PM□		0.061	8.6		13×10 ⁻⁷	0.071		CRK524PM□P CRK524PM□KP
	PK525PM□		0.09	12.7		19×10 ⁻⁷	0.104		CRK525PM□P CRK525PM□KP
42 (1.65)	PK544PM□ PK544PMA-R□ PK544PMA-R28L		0.24	34	0.75	60×10 ⁻⁷	0.33		CRK544PM□P CRK544PM□KP CRK544PMAP-R28 CRK544PMRKP
	PK546PM□ PK546PMA-R□ PK546PMA-R28L		0.42	59		121×10 ⁻⁷	0.66		CRK546PM□P CRK546PM□KP CRK546PMAP-R28 CRK546PMRKP
	PK564PM□ PK564PMA-R□ PK564PMA-R28L		0.78	110	310×10 ⁻⁷	1.7	CRK564PM□P CRK564PM□KP CRK564PMAP-R28 CRK564PMRKP		
60 (2.36)	PK566PM□ PK566PMA-R□ PK566PMA-R28L		1.3	184	1.4	480×10 ⁻⁷	2.7		CRK566PM□P CRK566PM□KP CRK566PMAP-R28 CRK566PMRKP
	PK569PM□ PK569PMA-R□ PK569PMA-R28L		2.3	320		970×10 ⁻⁷	5.3		CRK569PM□P CRK569PM□KP CRK569PMAP-R28 CRK569PMRKP

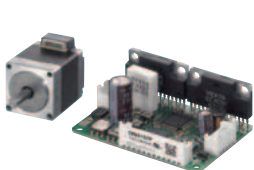
- Wirings and connections → Page A-288
- Encoder specifications → Page A-17
- See the page for the corresponding motor and driver package for speed-torque characteristics and dimensions.
- The dimensions of a motor with an encoder can be found on page A-20.
- The motor connection cable is available as an accessory.
- Enter the encoder code (17, 18, 27, or 28) in the box (□) within the model name.
- Enter A (single shaft) or B (double shaft) in the box (□) within the model name.
- Product Number Code → Page A-278
- *1 Adopted for motor frame size 28 mm (1.10 in.) and 60 mm (2.36 in.) products.
- *2 Adopted for motor frame size 42 mm (1.65 in.) products.
- *3 CE Marking is applied to a corresponding motor and driver package product.

Introduction of Stepping Motor and Driver Packages

Stepping motor and driver packages are available. Packages are outfitted with drivers specifically designed to obtain the motor's maximum performance.

DC Input Motor and Driver Package

CRK Series → Page A-168



Pulse Input



Built-In Controller

Step Angle 0.72°

Motor Frame Size 20 mm (0.79 in.), 28 mm (1.10 in.), 42 mm (1.65 in.)

PK Series High-Torque Type



Specifications (RoHS)



Motor Frame Size mm (in.)	Model • Single Shaft/Double Shaft • with TTL Type Encoder • with Differential Type Encoder	Connection Type	Maximum Holding Torque		Rated Current A/phase	Rotor Inertia J		Motor Lead Wires (Pins)	Corresponding Motor & Driver Package CRK Series (Pulse/Built-In Program)
			N-m	oz-in		kg·m ²	oz-in ²		
20 (0.79)	PK513P □	New Pentagon (Bipolar)	0.0231	3.2	0.35	1.6×10 ⁻⁷	0.0088	5	CRK513P □P CRK513P □KP
28 (1.10)	PK523P □		0.048	6.8		9×10 ⁻⁷	0.049		CRK523P □P CRK523P □KP
	PK525P □		0.078	11		18×10 ⁻⁷	0.098		CRK525P □P CRK525P □KP
42 (1.65)	PK544P □ PK544PA-R □ PK544PA-R27L		0.24	34	0.75	57×10 ⁻⁷	0.31		CRK544P □P CRK544P □KP CRK544PAP-R27 CRK544PRKP
	PK546P □ PK546PA-R □ PK546PA-R27L		0.42	59		114×10 ⁻⁷	0.62		CRK546P □P CRK546P □KP CRK546PAP-R27 CRK546PRKP

- Wirings and connections → Page A-288
- Encoder specifications → Page A-17
- See the page for the corresponding motor and driver package for speed-torque characteristics and dimensions.
- The dimensions of a motor with an encoder can be found on page A-20.
- The motor connection cable is available as an accessory.
- Enter the encoder code (**17**, **18**, **27**, or **28**) in the box (□) within the model name.
- Enter **A** (single shaft) or **B** (double shaft) in the box (□) within the model name.
- Product Number Code → Page A-278
- *1 Adopted for motor frame size 28 mm (1.10 in.) and 60 mm (2.36 in.) products.
- *2 Adopted for motor frame size 42 mm (1.65 in.) products.
- *3 CE Marking is applied to a corresponding motor and driver package product.

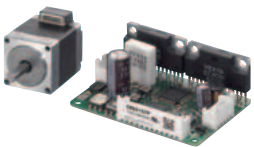
Introduction of Stepping Motor and Driver Packages

Stepping motor and driver packages are available. Packages are outfitted with drivers specifically designed to obtain the motor's maximum performance.

DC Input

Motor and Driver Package

CRK Series → Page A-168



Pulse Input

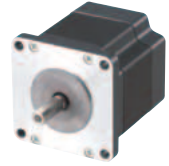


Built-In Controller

Introduction
AR ^{0.36°} / _{GEARED} ^{0.72°} / _{GEARED} AS ^{0.36°} / _{GEARED}
AC Input Motor & Driver
RK ^{0.72°} / _{GEARED}
UMK ^{0.9°/1.8°} / _{GEARED}
AR ^{0.36°} / _{GEARED} ^{0.36°} / _{GEARED}
ASX ^{0.36°} / _{GEARED}
DC Input Motor & Driver
CRK ^{0.36°/0.72°} / _{GEARED}
CMK ^{0.9°/1.8°} / _{GEARED}
RBK ^{1.8°} / _{GEARED}
PK ^{0.36°}
PK ^{0.72°}
PK ^{0.9°}
PK/PV ^{1.8°}
Geared PK
Controllers SCX10 EMP400 /SG8030J
Accessories

Step Angle 0.72°

Motor Frame Size 42 mm (1.65 in.), 60 mm (2.36 in.), 85 mm (3.35 in.)
PK Series Standard Type



Specifications (RoHS)



Motor Frame Size mm (in.)	Model • Single Shaft/Double Shaft • with TTL Type Encoder • with Differential Type Encoder	Connection Type	Maximum Holding Torque		Rated Current A/phase	Rotor Inertia J		Motor Lead Wires (Pins)	Corresponding Motor & Driver Package RK Series CRK Series (Pulse/Built-In Program)
			N-m	oz-in		kg-m ²	oz-in ²		
42 (1.65)	PK543N□W PK543NAW-R□ PK543NAW-R27L	New Pentagon (Bipolar)	0.13	18.4	0.75	35×10 ⁻⁷	0.191	5	CRK543□P CRK543□KP CRK543AP-R27 CRK543RKP
	PK544N□W PK544NAW-R□ PK544NAW-R27L		0.18	25		54×10 ⁻⁷	0.3		CRK544□P CRK544□KP CRK544AP-R27 CRK544RKP
	PK545N□W PK545NAW-R□ PK545NAW-R27L		0.24	34		68×10 ⁻⁷	0.37		CRK545□P CRK545□KP CRK545AP-R27 CRK545RKP
60 (2.36)	PK564N□W PK564NAW-R□ PK564NAW-R27L		0.42	59	1.4	175×10 ⁻⁷	0.96		CRK564□P CRK564□KP CRK564AP-R27 CRK564RKP
	PK566N□W PK566NAW-R□ PK566NAW-R27L		0.83	117		280×10 ⁻⁷	1.53		CRK566□P CRK566□KP CRK566AP-R27 CRK566RKP
	PK569N□W PK569NAW-R□ PK569NAW-R27L		1.66	230		560×10 ⁻⁷	3.1		CRK569□P CRK569□KP CRK569AP-R27 CRK569RKP
85 (3.35)	PK596□E PK596AE-R27		2.1	290	6.3	1400×10 ⁻⁷	7.7		RK596□E RK596AE-R27
	PK599□E PK599AE-R27		4.1	580		2700×10 ⁻⁷	14.8		RK599□E RK599AE-R27
	PK5913□E PK5913AE-R27		6.3	890		4000×10 ⁻⁷	22		RK5913□E RK5913AE-R27

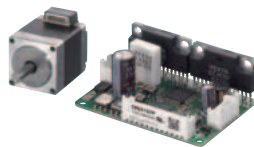
- Wirings and connections → Page A-288
Encoder specifications → Page A-17
- See the page for the corresponding motor and driver package for speed-torque characteristics and dimensions.
- The dimensions of a motor with an encoder can be found on page A-20.
- Enter the **A** (single shaft) or **B** (double shaft) in the box (□) within the model name.
Enter the encoder code (**17**, **18**, **27**, or **28**) in the box (□) within the model name.
Enter the **A** (single-phase 100-115 VAC) or **C** (single-phase 200-230 VAC) in the box (□) within the model name.
Product Number Code → Page A-278
- *1 Adopted for motor frame size 28 mm (1.10 in.) and 60 mm (2.36 in.) products.
- *2 Adopted for motor frame size 42 mm (1.65 in.) products.
- *3 CE Marking is applied to a corresponding motor and driver package product.

Introduction of Stepping Motor and Driver Packages

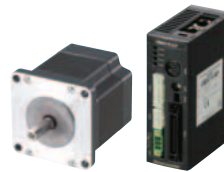
Stepping motor and driver packages are available. Packages are outfitted with drivers specifically designed to obtain the motor's maximum performance.

AC Input
Motor and Driver Package
RK Series → Page A-78

DC Input
Motor and Driver Package
CRK Series → Page A-168



Pulse Input



Built-In Controller

Step Angle 0.72°

Motor Frame Size 60 mm (2.36 in.), 85 mm (3.35 in.)

PK Series Standard Type Terminal Box



Specifications (RoHS)



Motor Frame Size mm (in.)	Model • Single Shaft	Connection Type	Maximum Holding Torque		Rated Current A/phase	Rotor Inertia J		Motor Lead Wires (Pins)	Corresponding Motor & Driver Package
			N·m	oz-in		kg·m ²	oz-in ²		RK Series
60 (2.36)	PK564AT	New Pentagon (Bipolar)	0.42	59	1.4	175 × 10 ⁻⁷	0.96	5	RK564A□T
	PK566AT		0.83	117		280 × 10 ⁻⁷	1.53		RK566A□T
	PK569AT		1.66	230		560 × 10 ⁻⁷	3.1		RK569A□T
85 (3.35)	PK596AT		2.1	290		1400 × 10 ⁻⁷	7.7		RK596A□T
	PK599AT		4.1	580		2700 × 10 ⁻⁷	14.8		RK599A□T
	PK5913AT		6.3	890		4000 × 10 ⁻⁷	22		RK5913A□T

- Wires and connections → Page A-288
- See the page for the corresponding motor and driver package for speed-torque characteristics and dimensions.
- Enter the **A** (single-phase 100-115 VAC) or **C** (single-phase 200-230 VAC) in the box (□) with in the model name.
- *CE Marking is applied to a corresponding motor and driver package product.

Introduction of Stepping Motor and Driver Packages

Stepping motor and driver packages are available. Packages are outfitted with drivers specifically designed to obtain the motor's maximum performance.

AC Input

Motor and Driver Package

RK Series → Page A-78



Introduction	AC Input Motor & Driver	DC Input Motor & Driver	Motor Only	Controllers	Accessories
AR DSTEP	0.36° / Geared AS DSTEP	0.36° / Geared AR DSTEP	0.36° / Geared PK	SCX10 EMP400 /SG8030J	
	0.72° / Geared RK	0.36° / Geared CRK	0.72° / Geared PK	1.8° / Geared PK	
	0.9° / 1.8° / Geared UMK	0.9° / 1.8° / Geared CMK	0.9° / Geared PK	1.8° / PV PK/PV	
	0.36° / Geared AR DSTEP	1.8° / Geared RBK	1.8° / Geared PK		
	0.36° / Geared ASX DSTEP				