

Aligning the pinnacle of high-end linear motion products with vast engineering expertise, PBC Linear has been providing laboratories with cost-saving, high performance products for over 25 years.

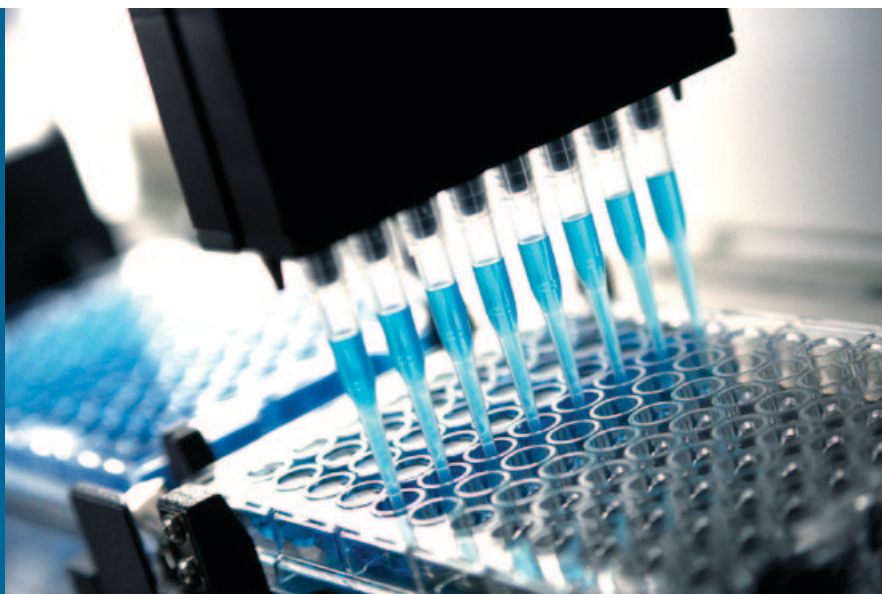
From simple linear movement to complex tasks, PBC Linear products provide clean, reliable guidance to ensure your critical tasks are accomplished with the utmost precision. These innovative solutions include products for rapid diagnostic testing, precision x-ray imaging, laser positioning and high accuracy pick and place gantry systems.

For reliable linear motion service that spans the entire design process from beginning to end, PBC Linear is the definitive choice. We diligently work with each customer through every step of the design process, supplying as much or as little involvement they require for their application.

PBC
LINEAR
A PACIFIC BEARING CO.

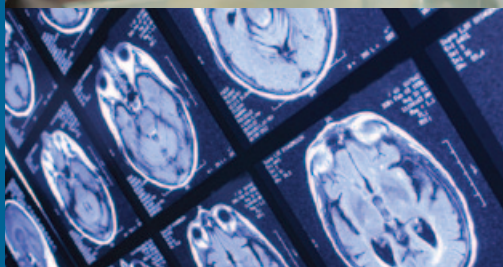
www.pbclinear.com

6402 E. Rockton Road • Roscoe, IL 61073
1-800-962-8979



LABORATORY AUTOMATION

DIAGNOSTICS • ANALYSIS • HANDLING



LINEAR MOTION SOLUTIONS • LINEAR ACTUATOR SERIES

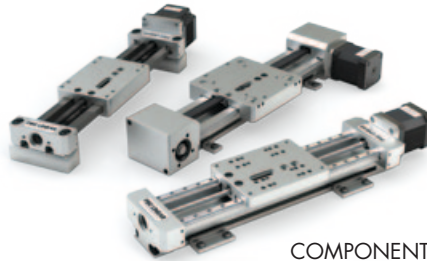
LABORATORY AUTOMATION

APPLICATION FOCUS

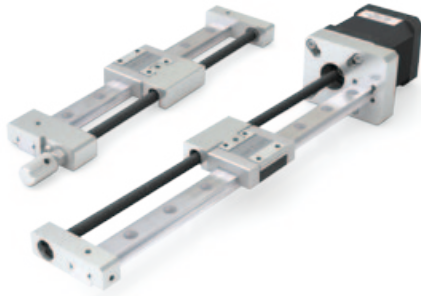
ML – MINIATURE LINEAR ACTUATOR



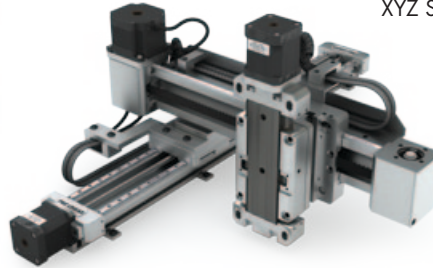
SIMO SERIES LINEAR MOTION PLATFORM



MS – MINIATURE LINEAR SLIDE



COMPONENTS
DRIVEN SLIDES
XYZ SYSTEMS



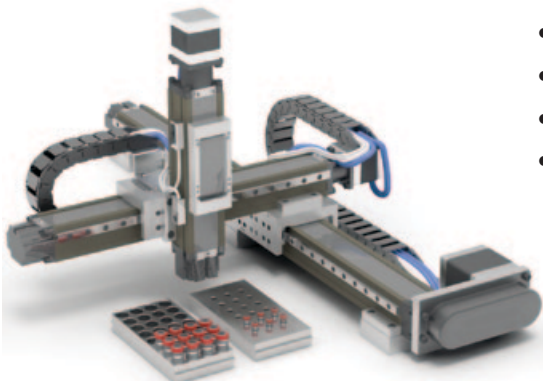
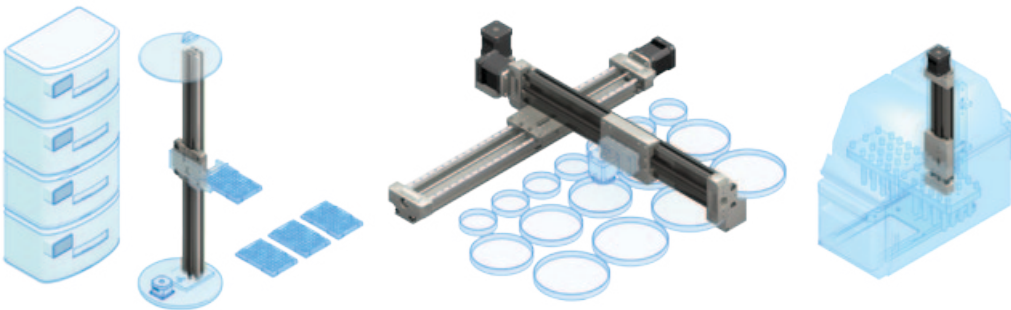
PBC Linear designs and manufactures numerous linear motion solutions for bio-sample handling and lab automation applications. From simple to complex maintenance-free components, all the way to sophisticated Cartesian robotic and automation systems, PBC's products ensure long-lasting operation, enhanced system performance, and lower total installed cost to give customers the competitive edge in the life science industry.

Problem:

PBC Linear was commissioned to design a gantry system for a completely automated, rapid diagnostic testing machine. This machine not only required high precision and speed, but also gentle pick-and-place handling of the extremely delicate test samples.

Solution:

Using a completely self-contained actuating gantry system that excels in clean-room operation, PBC Linear was able to design a fast-moving pick-and-place system outfitted with special gripping components to carefully handle the delicate test samples. After the gantry was installed, the rapid analyzer was able to cut diagnostic time in half!



- RAPID DIAGNOSTIC TESTING
- PRECISION X-RAY IMAGING
- LASER POSITIONING
- PICK AND PLACE GANTRY SYSTEMS.

PBC
LINEAR
A PACIFIC BEARING CO.

6402 E. Rockton Road
Roscoe, IL 61073 USA

LITTM-004-Lab Auto 4.13

For technical & application information call **1-800-962-8979** or visit **www.pbclinear.com**