

Note: dashed lines indicate dimensions for rack mount handles.

Feature Summary:

- 1 to 8 axis motor drives
- Servo or micro-step drives
- Interfaces directly to motion controllers from Galil, National Instruments & Delta Tau
- Desktop & rack mount 6U x 19"
- 48 & 75 VDC motor supply option
- Integrated motor power control system
- Many different cable options
- 110 or 220 VAC, 50/60 Hz input

Overview

The Primatics MDC800 is an integrated multi-axis motor drive system in a 6U tall chassis. A motion controller interface card is included, eliminating all user wiring between the controller and drives. Removable drive modules offer mix and match capability that lets you design the motion control system that is best for your particular application.

Drives

The MDC800 supports 1 to 8 drives. For the sake of easy configuration and maintenance, each drive is connected via a simple plug-in module. Drive cards are available for brush and brushless servo motors (including linear motors). Other drive card options include micro-step drivers and custom device interfaces.

Safety System

An integrated motor power control circuit eases integration into a work cell or machine safety system.

Connectors & Cables

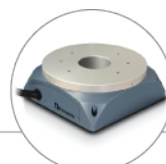
Each drive card is terminated with a robust circular connector. Connection diagrams and cable assemblies are available for many applications.

For more information and a complete datasheet, go to www.primatics.com

Performance Specifications	MDC800
Number of Motion Axis	1 to 8
Motor compatibility	DC brushed servo, DC brushless servo, and stepper
Controller compatibility	Galil Optima, Galil Accelera, Delta Tau PMAC 2, National Instruments
Motor Voltage (VDC)	48 or 75VDC
Continuous Output Power (watts)	1400 or 3000
Peak Output Power (watts)	2800 or 6000
Dimensions (H x W x D) (mm)	266.7 x 449.3 x 449.3
Operating Temperature (deg C)	0 to 45
Storage Temperature (deg C)	0 to 75
Weight (kg)	30



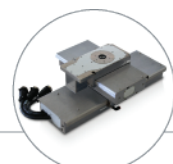
Linear Positioning



Rotary Positioning



Motion Controls



OEM Solutions

MODEL NUMBER CONFIGURATION

OPTIONS :

SAMPLE MODEL NUMBER :

MDC0800 R 4 -48V W2 C1 -D1 -D3 -D3 -D4 -XXXX

- Model Series**
1-8 Axis MDC0800
- Chassis Configuration**
Rack Controller R
Desktop Controller D
- Number of Axes**
1 Axis 1 5 Axis 5
2 Axis 2 6 Axis 6
3 Axis 3 7 Axis 7
4 Axis 4 8 Axis 8
- Amplifier Bus Voltage**
48V 48V
75V 75V
- Chassis Power Output**
700 Watts W1
1500 Watts W2
1000 Watts W4
- Communication Interface¹**
Galil Optima C1
Galil Accelera C5
Delta Tau PMAC 2 C2
NI-7344 C4
- Driver Card (specify one for each axis)²**
Brushless Servo - Trapezoidal D1
Brushed Servo D3
Microstepping Step Drive D4
Brushless Servo - Sinusoidal, Digital Drives D7
User Axis D9
- Customization Code (optional)**
Leave blank for 110VAC operation
220VAC operation with a NEMA 6-15 plug 220US
220VAC operation with a European (Schuko) plug 220EU
220VAC operation with a British Standard plug 220BS

¹ Call factory for custom controller interfaces.
² The Drive Options are based on the following:
 D1 - Trap drive, 6A continuous, 12A peak, 20-85V
 D3 - Trap drive configured for brush operations, 6A continuous, 12A peak, 20-85V
 D4 - Step drive, 5A RMS/7A peak, 24-75V
 D7 - Digital sinusoidal drive, 3A continuous, 9A peak, 20-85V
 D9 - User axis

