

### Feature Summary:

- Multi-axis servo motor drive, 1-4 axes
- Integrated interface for National Instruments motion controllers
- Drive option for 3A or 6A continuous current
- Brush or brushless servo motors
- Integrated 675 Watt motor power supplies
- Operates from 110 or 220 VAC
- External Enable loop
- Many different cable options

### Overview

The Primatics MDM2100 is a multi-axis servo motor drive system with an integrated interface to any National Instruments motion controller. A single cable connects the MDM2100 to a NI card.

### Drive Options

The MDM2100 is a higher power alternative to the NI MID-765X, making it suitable for larger motors. It is available in 1, 2, 3 or 4 axis configurations, allowing the user to choose the exact number of axes required in the application.

### Connectors and Cables

The MDM2100 connects to any NI controller with a single SHC68-C68-S cable from National Instruments. All axis signal connections are made through a robust circular connector for each axis. Cable assemblies are available for use with any Primatics servo motor stage as well as many third party components.

### Enable Loop

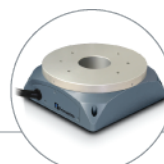
An external ENABLE LOOP allows easy integration into a machine safety system.

For more information and a complete datasheet, go to [www.primatics.com](http://www.primatics.com)

Performance Specifications	MDM2100			
Number of Motion Axes	1-4			
Controller Compatibility	National Instruments			
Dimensions (H x W x D) (mm)	85.7 x 304.8 x 368.3			
Operating Voltage	110 VAC or 220 VAC			
Motor Voltage	48 or 70 VDC			
Motor Current	3 or 5 A			
Drive Type	D1	D2	D3	D4
Motor Type	Brush	Brush	Brushless	Brushless
Continuous / Peak Current (A)	3 / 6	6 / 12	3 / 6	6 / 12
Maximum Voltage (V)	60	80	60	80



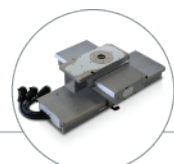
Linear Positioning



Rotary Positioning



Motion Controls



OEM Solutions

# MODEL NUMBER CONFIGURATION

OPTIONS :

SAMPLE MODEL NUMBER :

MDM2100D -2 -48VW1 -C4 -D1 -D3 -XXXX

- Model Series**  
Desktop Servo Motor Controller ..... MDM2100D ]
- Number of Axes**
- 1 Axis ..... 1 ]
- 2 Axes ..... 2 ]
- 3 Axes ..... 3 ]
- 4 Axes ..... 4 ]
- Power Supply <sup>1</sup>**
- 48V, 625W ..... 48VW1 ]
- 70V, 625W ..... 70VW1 ]
- Motion Control Interface**
- NI-7344 ..... C4 ]
- Drive Type (configure one per axis)**
- Brush, 3A cont / 6A peak, 60V Max ..... D1 ]
- Brush, 6A cont / 12A peak, 80V Max ..... D2 ]
- Brushless, 3A cont / 6A peak, 60V Max ..... D3 ]
- Brushless, 6A cont / 12A peak, 80V Max ..... D4 ]
- Customization Code (optional)**
- Leave blank for 110VAC operation
- 220VAC operation with a NEMA 6-15 plug ..... 220US ]
- 220VAC operation with a European (Schuko) plug . . . 220EU ]
- 220VAC operation with a British Standard plug . . . 220BS ]
- Other codes assigned by factory.

<sup>1</sup> Other voltages available upon request.

