

Feature Summary:

- Multi-axis stepper motor drive, 1-4 axes
- Integrated interface for National Instruments motion controllers
- Drive option for 3A or 5A continuous current
- Brush or brushless stepper motors
- Integrated 625 Watt motor power supplies
- Operates from 110 or 220 VAC
- External Enable loop
- Many different cable options

Overview

The Primatics MDM2200 is a multi-axis stepper motor drive system with an integrated interface to any National Instruments motion controller. A single cable connects the MDM2200 to a NI card.

Drive Options

The MDM2200 is a higher power alternative to the NI MID-765X, making it suitable for larger motors. It is available in 1, 2, 3 or 4 axis configurations, allowing the user to choose the exact number of axes required in the application.

Connectors and Cables

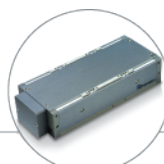
The MDM2200 connects to any NI controller with a single SHC68-C68-S cable from National Instruments. All axis signal connections are made through a robust circular connector for each axis. Cable assemblies are available for use with any Primatics stepper motor stage as well as many third party components.

Enable Loop

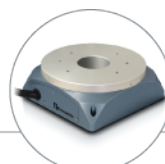
An external ENABLE LOOP allows easy integration into a machine safety system.

For more information and a complete datasheet, go to www.primatics.com

Performance Specifications	MDM2200	
Number of Motion Axes	1-4	
Controller Compatibility	National Instruments	
Dimensions (H x W x D) (mm)	85.7 x 304.8 x 368.3	
Operating Voltage (VAC)	110 or 220	
Motor Voltage (VDC)	24, 42 or 60	
Drive Type	D5	D6
Motor Type	Microstep Drive	Microstep Drive
Continuous / Peak Current (A)	3 / 4	5 / 7



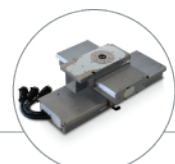
Linear Positioning



Rotary Positioning



Motion Controls



OEM Solutions

MODEL NUMBER CONFIGURATION

OPTIONS :

SAMPLE MODEL NUMBER :

MDM2200D 2 -42VW1 C4 -D5 -D6 -XXXX

- Model Series**
Desktop Stepper Motor Controller. MDM2200D
- Number of Axes**
1 Axis 1
2 Axes 2
3 Axes 3
4 Axes 4
- Power Supply ¹**
24V, 625W 24VW1
42V, 625W 42VW1
60V, 625W 60VW1
- Motion Control Interface**
NI-7344. C4
- Drive Type (configure one per axis)***
Microstep drive, 3A rms / 4A peak D5
Microstep drive, 5A rms / 7A peak D6
- Customization Code (optional)**
Leave blank for 110VAC operation
220VAC operation with a NEMA 6-15 plug 220US
220VAC operation with a European (Schuko) plug 220EU
220VAC operation with a British Standard plug 220BS
Other codes assigned by factory.

* D5 used with 24VW1 or 42VW1 Power supply
 D6 used with 42VW1 or 60VW1 Power supply
¹ Other supply voltages available upon request.

