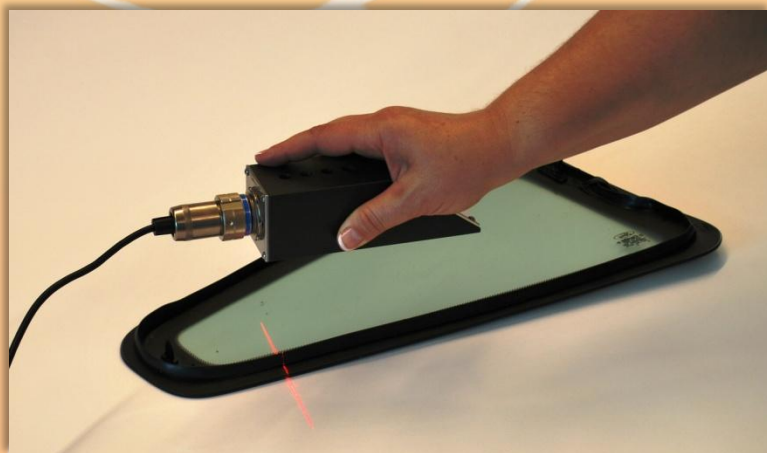
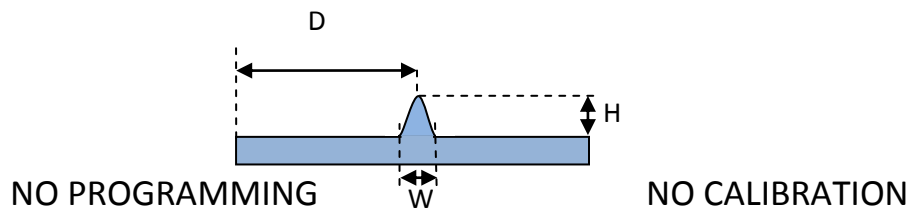


Lucana M Bead Sensor

The Lucana M Bead Sensor can measure the height, width, and distance to part edge of any bead or element that protrudes from the part surface. Our innovation allows Lucana M Bead to perform measurements automatically without calibration, setup, or programming.

Measures Height, Width, and Distance

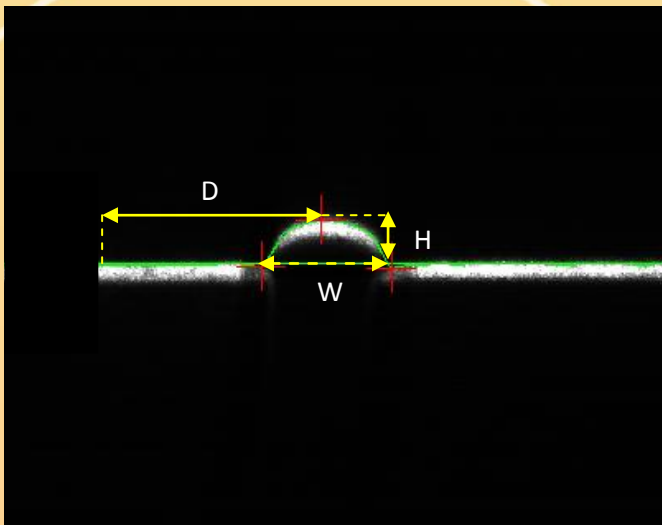


- Cost Effective
- Front Measurement
- No Part Enclosure
- Handheld or Attached
- Measures bead height, width, and distance
- Measures on the Fly

Lucana M Bead Sensor



User Interface



This is the user interface for the Lucana M Bead Sensor measuring the height and width of the bead as well as the distance to edge of the part. The user can view or send the measurements in millimeters or inches as well as setting limits for the measurements. The data can be sent to another device using UDP, TCP/IP protocol, and log the data locally or on any network device.

Operation

Start Once Save Image

Stop Calc. Time: 359 ms

Total: 533 ms

Continuous Measurement, single measurement and time

Data Logging

Commit Number test1 Log Data

Operator Add Num Delete Num

Stefanie Log Overlap Delete Entry

Data Logging to local or network drive with ability to specify a tag such as part list

Measurements

Width	6.42	mm	<input checked="" type="radio"/>
Height	9.53	mm	<input checked="" type="radio"/>
Area	33.23	mm.sq	<input checked="" type="radio"/>
Distance to Edge	14.89	mm	<input checked="" type="radio"/>

Units IN

Measurement in millimeter or inches

Tolerances

model 2 Admin

Add Model Delete Model Use Part Lock

Max Width	0	mm	<input checked="" type="radio"/>	1
Min Width	0	mm	<input type="radio"/>	2
Max Height	0	mm	<input type="radio"/>	3
Min Height	0	mm	<input type="radio"/>	4
Max Area	0	mm.sq	<input type="radio"/>	5
Min Area	0	mm.sq	<input type="radio"/>	6
Max Distance	0	mm	<input type="radio"/>	7
Min Distance	0	mm	<input type="radio"/>	8

Unlock Apply

Tolerance setting for pass/fail output to digital I/O (Optologic) or set flag in communication. Change up to eight different tolerances per model.

Transfer/Trigger

Enable I/O Trigger I/O

Trigger UDP Pushbutton Trigger

Communications TCP/IP, UDP, and I/O (Optologic)

Exposure Control

61 Apply

Control to accommodate different surface reflectance

Parameters

Curvature length	60	IE	60
Min Curvature	20		20
Edge Strength	10		20
Glass Edge on Left	<input type="checkbox"/>		

Lucana M Bead Sensor

Specifications



Measurements	Bead Height, Width, and Distance
Resolution	
On Center	± 0.076 mm / 0.003 in
Within Box	± 0.127 mm / 0.005 in
Nominal Height range:	55 – 135 mm / 2.17 – 5.31 in
Nominal Width range:	47 mm / 1.85 in
Nominal Standoff distance	85 mm / 3.35 in
Output:	UPD, TCP/IP, Digital I/O Data Logging
Dimension	
Sensor	(w x h x d) 25.4 x 25.4 x 177.8 mm, 2 x 2 x 7 in
Processor	(w x h x d) 166 x 48 x 157 mm, 6.5 x 1.9 x 6.2 in
Input voltage	12V
Input current	5A
Environmental	
Storage Temperature	-10° C to +70° C
Operating Temperature	+5° C to + 50° C