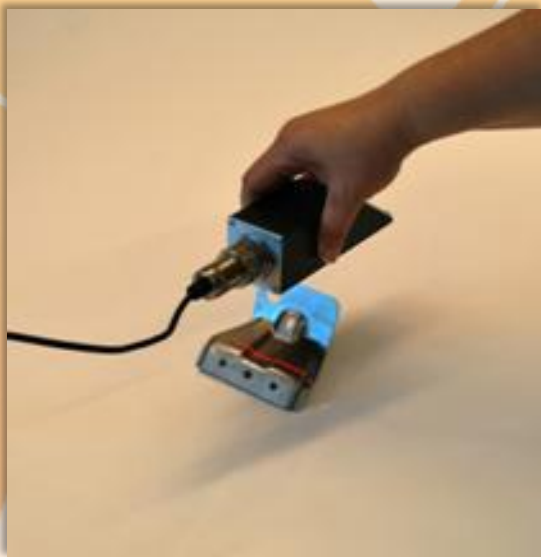
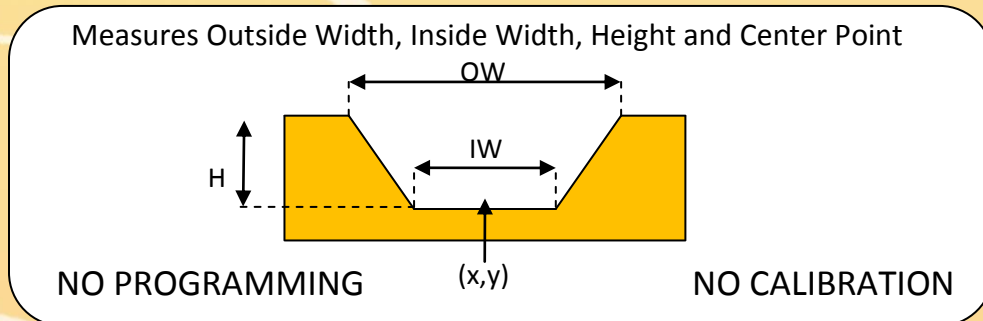


Lucana M Track Sensor

The Lucana M Track Sensor can measure the outside width, inside width, height, and center point of a channel in the surface of a part or object. Our innovation allows Lucana M Track to perform measurements without calibration, setup, or programming.

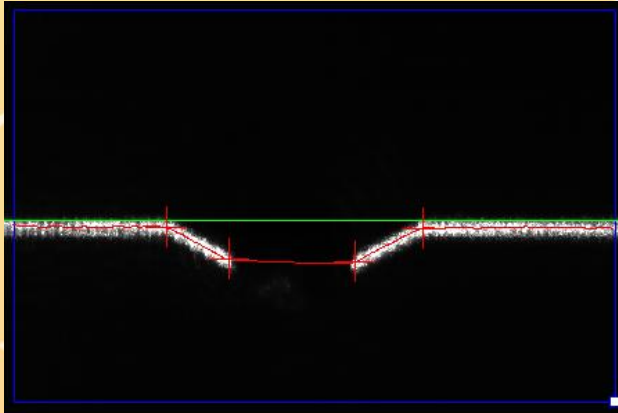


- Cost Effective
- Front Measurement
- Handheld or Attached
- Measures outside width, inside width, height, and center point
- Measures on the Fly

Lucana M Track Sensor



User Interface



The user interface for Lucana M Track Sensor measuring the dimensions of a channel in a surface of a part or object. The user can view the measurements of the dimensions in millimeters or inches and set the tolerance for pass or fail. The data can be sent to another device via UDP, TCP/IP protocol as well as log the data locally or on any network drive.

Operation

Start Once Save Image

Stop Calc. Time: 461 ms Total: 598 ms

Data Logging

Part List

Enable Logging Add Delete

Measurements

Width	17.46	mm	<input checked="" type="radio"/>	Units
Height	0.00	mm	<input checked="" type="radio"/>	
X Pos	1.76	mm	<input checked="" type="radio"/>	IN
Z Pos	79.45	mm	<input checked="" type="radio"/>	

RAW Zero

Tolerances

Max Width	100	mm
Min Width	0	mm
Max Height	8	mm
Min Height	7	mm
Max X Pos	6	mm
Min X Pos	5	mm
Max Z Pos	4	mm
Min Z Pos	3	mm

Apply

Transfer/Trigger

Enable I/O Trigger I/O

Trigger UDP Trigger TCP/IP

Exposure Control

58 Apply

Parameters

Curvature length	30
Min Curvature	20
Edge Strength	30

Help Apply

Continuous Measurement, single measurement and time

Data Logging to local or network drive with ability to specify a tag such as part list

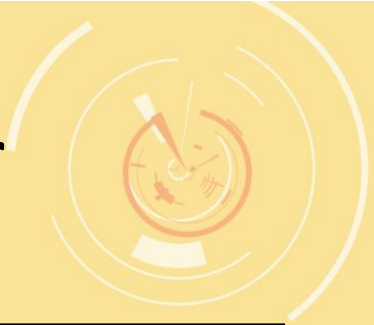
Measurement in millimeter or inches

Tolerance setting for pass/fail output to digital to digital I/O (Optologic) or set flag in communication.

Communications TCP/IP, UDP, and I/O (Optologic)

Control to accommodate different surface reflectance

Lucana M Track Sensor



Specifications

Measurements	Outside Width, Inside Width, Height, and Center Point
Resolution	
On Center	± 0.076 mm / 0.003 in
Within Box	± 0.127 mm / 0.005 in
Minimum Width	2.2 mm/0.9 in
Maximum Width	38 mm/1.50 in
Minimum Depth	0 mm/0 in
Maximum Depth	30 mm/3.5 in
Minimum X	132.55 mm / 5.50 in
Maximum X	57.84 mm / 2.40 in
Minimum Z	-24.34 mm / -1.01 in
Maximum Z	24.34 mm / 1.01 in
Nominal Standoff distance	85 mm/3.35 in
Output	UPD, TCP/IP, Digital I/O Data Logging
Dimension	
Sensor	(w x h x d) 25.4 x 25.4 x 177.8 mm, 2 x 2 x 7in
Processor	(w x h x d) 166 x 48 x 157 mm, 6.5 x 1.9x 6.2in
Input voltage	12V
Input current	5A
Environmental	
Storage Temperature	-10° C to +70° C
Operating Temperature	+5° C to + 50° C