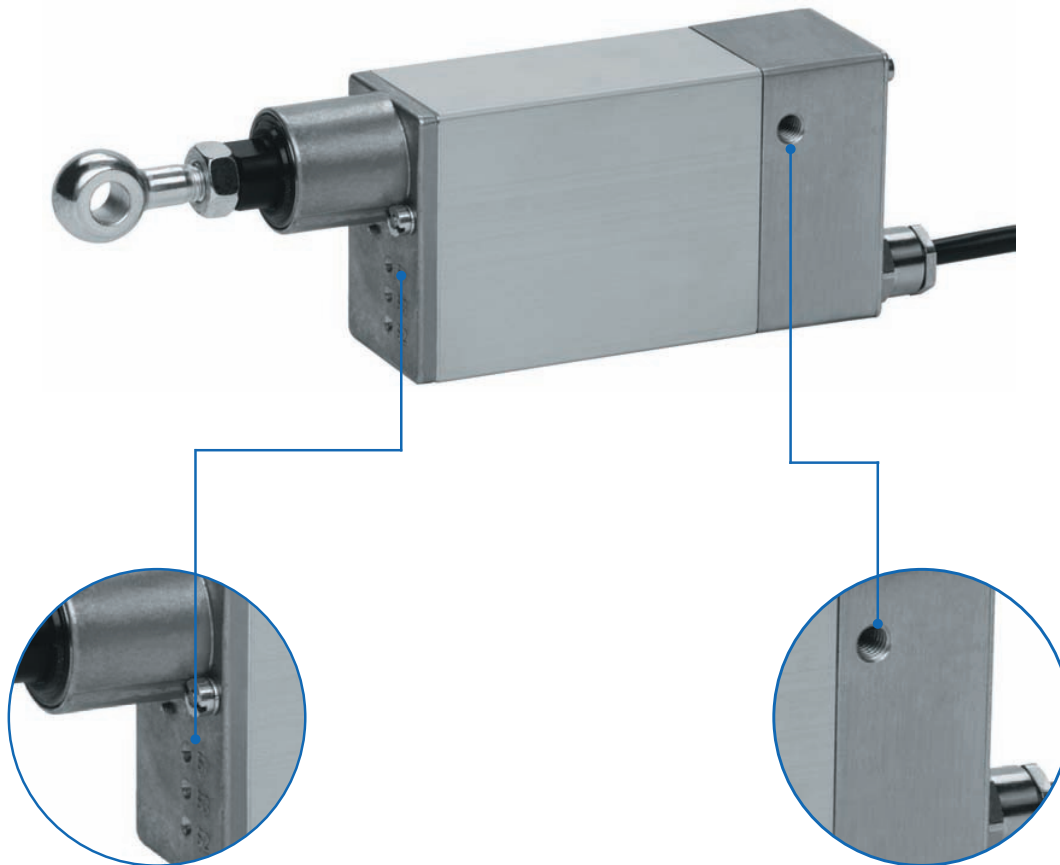


M10, LH10, LH11, LH950 Electric cylinder



Adjustable stroke lengths (not available with M10)

- ✓ Precise adjustment

Tapped holes

- ✓ Thread for trunnion mounting

Features:

- Integrated limit switch
- Maintenance-free (permanent lubrication)
- Iron free high-performance motors
- Various travel speeds
- Can be installed in any position

Options:

- Other travel speeds, special stroke lengths
- Potentiometer (only available with LH10, LH11, LH 950)
- 3rd limit switch enables centre position (only available with LH10, LH11, LH 950)
- Corrosion protected screw and push rod

General information/operating conditions

	M 10	LH 10	LH 11	LH 950
Design	Linear cylinder with integrated DC motor			
Guide				Slide bush
Installation position	Any position, without shear forces			
Push force/ Pull force	Up to 300 N	Up to 300 N	Up to 300 N	Up to 500 N
Self-locking	Up to 500 N	Up to 500 N	Up to 500 N	Up to 1250 N
Ambient temperature	-20°C to +40°C	-20°C to +40°C	-20°C to +85°C	-20°C to +85°C
Repeatability	0.5 mm			
Duty cycle (at max. load)	at 20°C 40% at nominal load (max. 8 mins operating time, 12 mins rest time)			
Voltage	24 (12) V DC			
Current consumption	Max. 1.1 A			
Power input	Max. 27 W			
Protection class	IP 40	IP 54	IP 54	IP 54

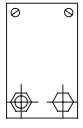
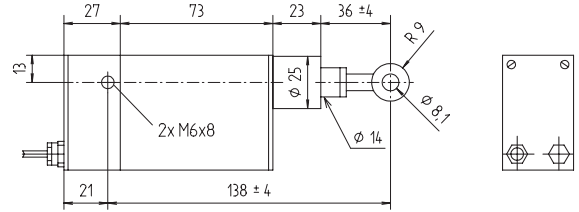
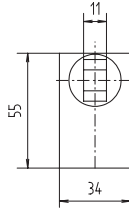
Version

Code No.	Type	Max. force F [N]	Max. speed [mm/s]	Stroke length [mm]	Weight [kg]
QKB01_C010040	M 10	300	0.25	40	0.45
QKB02_C010040		300	1.9		
QKB04_B010040		200	4		
QKB10_A010040		50	10		
QKM01_C010090	LH 10	300	0.25	90	0.55
QKM02_C010100		300	1.9	100	0.55
QKM04_B010100		200	4		
QKM10_A010100		50	10		
QKN07_C010100	LH 11	300	7		
QKN22_A010100		100	22		
QKR04_E010100	LH950	500	4	100	1.15

Voltage:
B = 24 V DC
c = 12 V DC

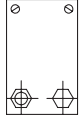
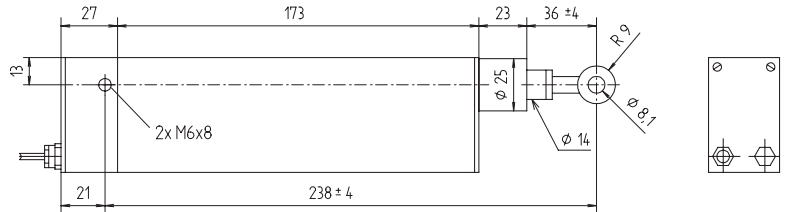
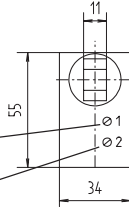
M10, LH10, LH11, LH950 - Versions

M 10



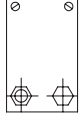
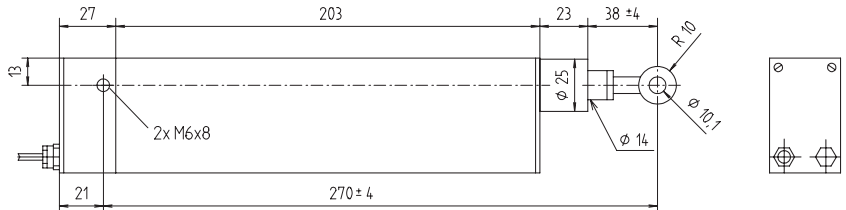
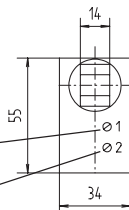
LH 10

Adjustment of stroke length
Adjustment of installation dimension



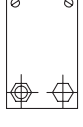
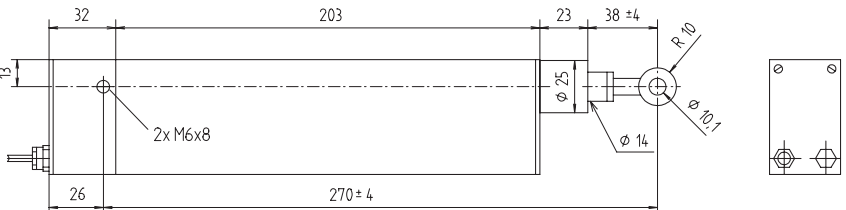
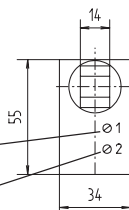
LH 11

Adjustment of stroke length
Adjustment of installation dimension



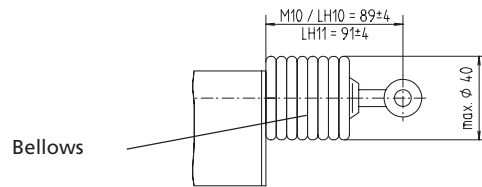
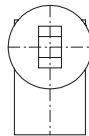
LH 950

Adjustment of stroke length
Adjustment of installation dimension

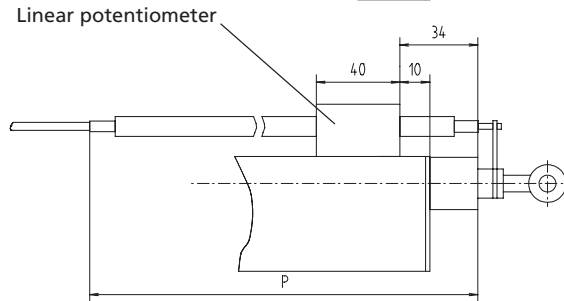
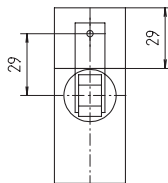


Options:

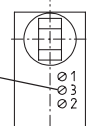
Bellows



External potentiometer



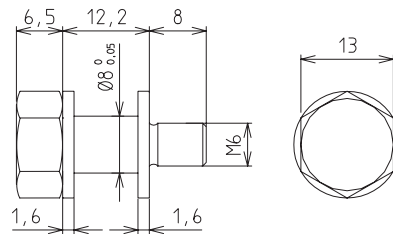
3rd limit switch
(for intermediate positions)



	[mm]			
Stroke length	15	40	90	100
Dimension P	105	130	180	205

Trunnion kit

- The trunnion is screwed into the thread in the side of the electric cylinder
- **Material:** Galvanised steel
- Each kit comprises two trunnions



Code No.	Type
QZD050003	Trunnion kit



Adjustment of combine harvester sieve via series 010 electric cylinder. Ideal for use in harsh conditions (heat, dust and vibrations).