



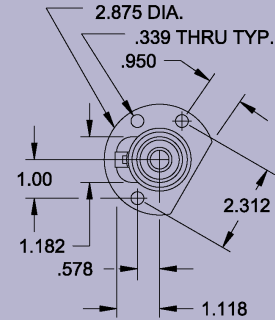
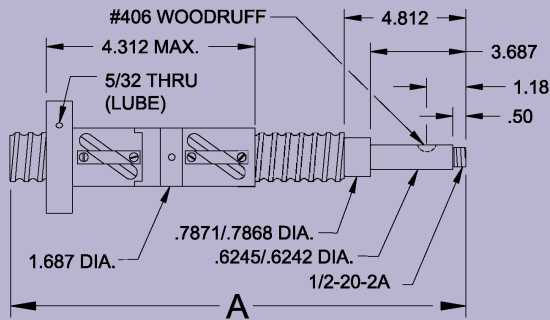
**THESE TOUGH, BRIDGEPORT RETROFIT KITS  
OFFER MANY CONVENIENT FEATURES:**

- **High-Capacity, Long-Life:** Each ball nut assembly of the Rockford preloaded unit has one circuit of 3 1/2 turns of ball bearings. It will provide a load life expectancy of 50 million inches of travel at an operating load of 400 pounds. The screw and nut assemblies are made of hardened steel.
- **Precision-Rolled Ball Screws:** Lead accuracy is guaranteed to be within .003 inches per foot accumulative. Lead charts for programming lead error on n/c applications are available.
- **Preloaded Ball Nuts:** Each ball nut is preloaded to eliminate lost motion. This system stiffness provides faster response from a control command. This added stiffness also allows heavier cuts and climb milling thus increasing productivity. The Rockford preload is adjustable. This feature permits readjustment for wear and reduces the need for repair or replacement at some time in the future.
- **Brush-Type Wipers:** Brush-type wipers, at the ends of each preloaded ball nut assembly prevents entry of dirt and metal chips.
- **Easy-Access Lubrication:** Lubrication of ball nuts made easy through 5/32" holes in the flanges. These holes provide for attachment of existing lube tubing.
- **High-Strength Housing:** The high-strength support housing reduces lost motion. The ductile iron housing reduces cross-slide deflection to less than 50% of the original installation. The housing is fully machined and ready to bolt in.
- **Easy Installation:** Installation procedure is simple and typical installation time is 1-2 hours.
- **Kits in Stock:** for any Table Size (Manual or Power Feed). Clone Mill Kits are made to order.
- **Angular Contact Bearings:** Angular contact bearings and spacer sets for replacement of original radial bearings (reduce backlash and increase rigity). PART NUMBER BRP-7204

**Clone Mill Retrofit Kits  
available for following mills\*:**

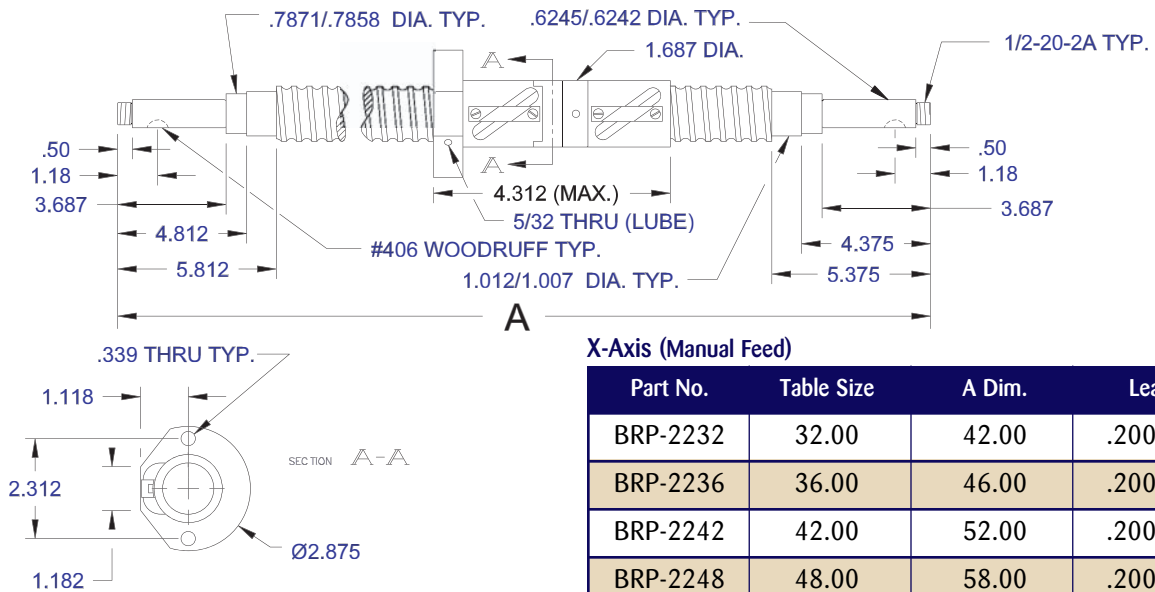
- ACER MILL
- ALLIANT MILL
- ATRUMP MILL
- CLAUSING KONDIA MILL
- CLEVELAND MILL
- ENCO MILL
- INDEX MILL
- KENT MILL
- LAGUN FTV 1,2,3
- MILLPORT MILL
- PARTNER O MILL
- PRATT & WHITNEY MILL
- SHARP MILL
- SIEBER HEGNER
- SOUTH BEND MILL
- SUPERMAX MILL
- VICTOR MILL
- WEBB MILL

\*Consult factory on other mills not listed.



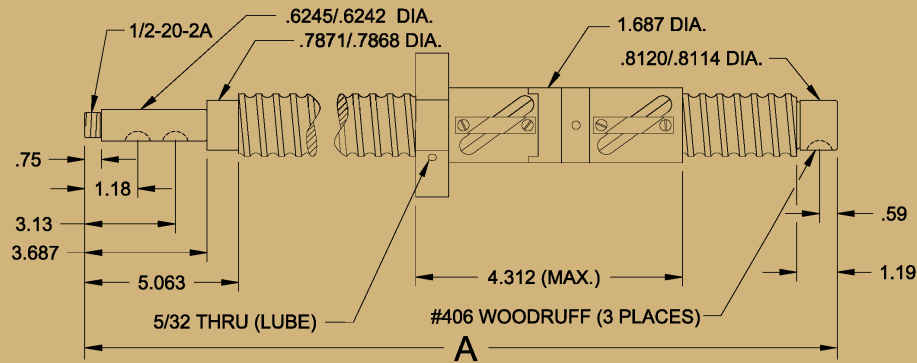
Part No.	Table Stroke	A Dim.	Lead
BRP-2209	9.00	21.00	.200 LH

Part No.	Table Stroke	A Dim.	Lead
BRP-2212	12.00	24.00	.200 LH



X-Axis (Manual Feed)

Part No.	Table Size	A Dim.	Lead
BRP-2232	32.00	42.00	.200 RH
BRP-2236	36.00	46.00	.200 RH
BRP-2242	42.00	52.00	.200 RH
BRP-2248	48.00	58.00	.200 RH



Part No.	Table Size	A Dim.	Lead
BRP-2232PF	32.00	36.25	.200 RH
BRP-2236PF	36.00	40.25	.200 RH

Part No.	Table Size	A Dim.	Lead
BRP-2242PF	42.00	46.25	.200 RH
BRP-2248PF	48.00	52.25	.200 RH

Note: Most makes of power feed units are made to fit on a standard manual feed screw (see above). Ball Nut Dimension same as x-axis above. Gear Box Power Feed Screws also available (not shown).