

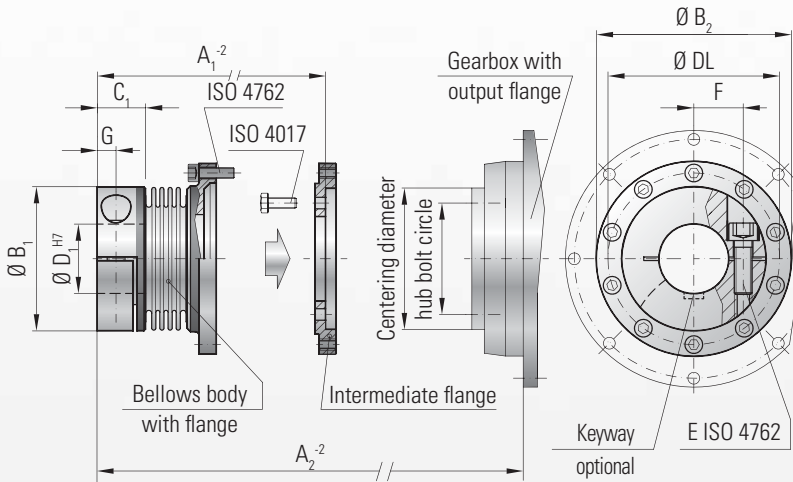


# MODEL BK8

BACKLASH-FREE, TORSIONALLY STIFF METAL BELLOWS COUPLINGS

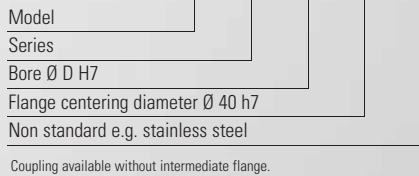


ISO flange mounting



### Ordering example

BK8 / 15 / 24 / 40 / XX



Model BK 8		Series				
		15	60	150	300	1500
Flange centering diameter (mm)		40 h7	63 h7	80 h7	100 h7	160 h7
Flange bolt circle / thread Ø (mm)		31.5 8x M5	50 8x M6	63 12x M6	80 12x M8	125 12x M10
Maximum torque* (Nm)		50	210	380	750	2600
Length -2 (mm)	A <sub>1</sub>	48.5	67	72	90	140
Length -2 (mm)	A <sub>2</sub>	68	97	101	128	190
Outside diameter (mm)	B <sub>1</sub>	49	66	82	110	157
Flange diameter (mm)	B <sub>2</sub>	63.5	86	108	132	188
Fit length (mm)	C	16.5	23	27.5	34	55
Inside diameter possible from Ø to Ø H7 (mm)	D	12-28	14-35	19-42	24-60	50-80
Hub bolt circle (mm)	DL	56.5	76	97	120	170
Fastening threads		10 x M4	10 x M5	10 x M6	12 x M6	18 x M8
Fastening screws ISO 4762	E	1 x M5	1 x M8	1 x M10	1 x M12	2 x M20
Tightening torque (Nm)		8	45	80	120	470
Distance (mm)	F	1 x 17.5	1 x 23	1 x 27	1 x 39	2 x 55
Distance (mm)	G	6.5	9.5	11	13	22.5
Approximate weight (kg)		0.3	0.7	1	2.8	10
Moment of inertia (10 <sup>-3</sup> kgm <sup>2</sup> )	J <sub>ges</sub>	0.15	0.65	1.3	5.5	45
Lateral  ±(mm)	Max. value	0.25	0.25	0.25	0.25	0.25
Angular  ±(degree)		1	1	1	1	1
Axial  ±(mm)		1	1.5	2	2.5	3

\* maximum torque transmittable only for brief periods and requires maximum bore for clamping strength

1 Nm = 8.85 in lbs

### Features:

- backlash free with high torsional rigidity
- easy mounting and dismounting
- suited for space restricted installations
- high transmittable torques with compact design

### Material:

Bellows made from highly flexible, high grade stainless steel; the hubs are made from aluminium (series 300 and 1,500 are made from steel); the intermediate flange is made from steel (standard).

### Design:

With a single ISO 4762 radial screw on clamping hub. Flange hub with separate intermediate flange for mounting to gearbox.

**Speeds:** Up to 10,000 rpm

**Temperature range:** -30 to +100° C (-22 to +212° F)

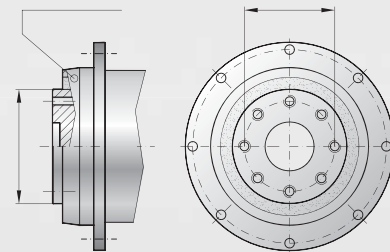
### Fit tolerance:

Overall clearance between hub and shaft 0.01-0.05 mm

### Non standard applications:

Custom designs with various tolerances, keyways, materials, dimensions, etc. available upon request

### Gearbox with output flange



The bolt circle will be machined to match the gearbox

### Mounting and dismounting

