

[Home Page](#) [About Skamar](#) [Catalog](#)
[Contact Skamar](#)

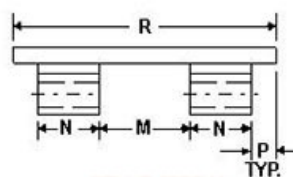
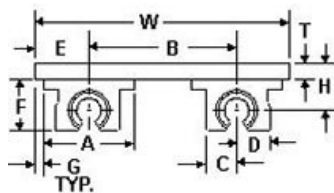
PRODUCT FEATURES AND BENEFITS



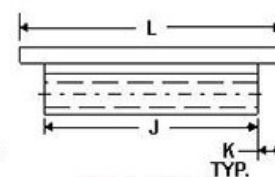
These precision machined carriage assemblies are offered in two standard styles incorporating self-lubricating bearings in single or twin pillow block configuration. The open pillow block bearing design provides self-alignment capabilities in all directions along with higher load capacities compared to linear ball bearings. Self-lubricating bearings offer consistent friction characteristics that do not increase over life and maintain close fits resulting in shaft wiping which eliminates the need for seals. The self-lubricating bearings can also embed hard particulate matter preventing galling and shaft damage. Carriage plate assemblies can be furnished with premachined mounting holes to simplify installation. The “SSCA” and “TSCA” carriage assemblies are prealigned to match the “SMPRA” dual shaft support assemblies or the “SMRA” single shaft support assemblies. Skamar Machine Company also provides complete in-house machining capabilities offering total solutions in this product range for your linear motion requirements. Most importantly, we provide you consistently with the best delivery in the industry on standard and engineered carriage assemblies.

CARRIAGE ASSEMBLIES INCORPORATING LINEAR BALL BEARINGS FOR DUAL SHAFT SUPPORT OR SINGLE (SMRA-) TYPE SUPPORT ASSEMBLY

SHAFT DIA.	SINGLE CARRIAGE ASSEMBLY	TWIN CARRIAGE ASSEMBLY	A	B	C	D	E	F	G	H	J
1/2	SBCA-8	TBCA-8	2.00	3.000	.69	.90	1.25	1.10	.25	1.062	3.50
5/8	SBCA-10	TBCA-10	2.50	3.750	.88	1.10	1.50	1.38	.25	1.250	4.00
3/4	SBCA-12	TBCA-12	2.75	4.500	.94	1.16	1.62	1.54	.25	1.437	4.50
1	SBCA-16	TBCA-16	3.25	5.250	1.19	1.46	1.88	1.98	.25	1.687	6.00
1-1/4	SBCA-20	TBCA-20	4.00	6.000	1.50	1.83	2.25	2.48	.25	2.250	7.50
1-1/2	SBCA-24	TBCA-24	4.75	6.625	1.75	2.09	2.69	2.91	.31	2.750	9.00
2	SBCA-32	TBCA-32	6.00	7.250	2.25	2.64	3.38	3.66	.38	3.375	10.000



STYLE "SBCA"
(4) SINGLE PILLOW BLOCKS



STYLE "TBCA"
(2) TWIN PILLOW BLOCKS

SHAFT DIA.	K	M	N	P	T	W	R	L	SBCA LOAD (LBS)	SBCA WEIGHT (LBS)	TBCA LOAD (LBS)	TBCA WEIGHT (LBS)
1/2	1.25	8.50	1.50	.25	.375	5.50	12.00	6.00	3900	3.29	3900	2.01
5/8	1.00	8.00	1.75	.25	.375	6.75	12.00	6.00	5880	4.60	5880	3.08
3/4	.76	7.75	1.88	.25	.500	7.75	12.00	6.00	7620	6.61	7620	4.27
1	.00	6.25	2.62	.25	.500	9.00	12.00	6.00	14100	9.95	14100	6.63
1-1/4	.25	4.75	3.38	.25	.750	10.50	12.00	8.00	20580	18.73	20580	14.54
1-1/2	1.50	10.00	3.75	.25	1.000	12.00	18.00	12.00	28200	35.34	28200	27.44
2	1.00	8.00	4.75	.25	1.250	14.00	18.00	12.00	50100	58.07	50100	48.04

NOTES:

- ALL LOAD RATINGS BASED ON APPLICATION POINT APPLIED AT CENTER OF CARRIAGE PLATE.
- MATERIAL SPECIFICATIONS (CARRIAGE PLATE): 6061-T6 ALUMINUM, STAINLESS STEEL.
- STANDARD CARRIAGE PLATE FINISH: BLACK ANODIZED, OPTIONAL CARRIAGE PLATE FINISH: UNPLATED, CLEAR , BLUE, OR GOLD ANODIZED ALUMINUM
- CUSTOM CARRIAGE PLATE ASSEMBLY INQUIRES CAN BE FAXED TO:(216)249-8674 OR EMAILED TO: info@skamar.com

[HOME](#) | [ABOUT SKAMAR](#) | [CATALOG](#) | [CONTACT SKAMAR](#)

©Copyright 2007 SKAMAR All Rights Reserved

The data and specifications in this publication are believed to be accurate and reliable. However, it is the responsibility of the product user to determine the suitability of Skamar Machine products for a specific application. While defective products will be replaced without charge if promptly returned, no liability is assumed beyond such replacement.