

[Home Page](#)   [About Skamar](#)   [Catalog](#)  
[Contact Skamar](#)

**PRODUCT FEATURES AND BENEFITS**

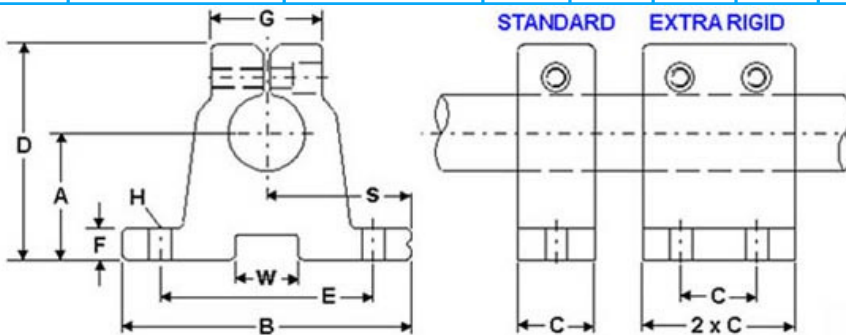


Shaft end supports are useful in applications where load and deflection between supports are not significant to the functionality of the application. These support blocks can either be used for end or intermittent support. For greater design flexibility, they are offered in standard and extra rigid configurations depending on the requirements of their use. The design of the end support includes a machined reference edge on one side for ease of mounting and installation. These end supports would normally be used in conjunction with closed pillow blocks incorporating either linear ball bearings or self-lubricating bearings depending on the type of application. Skamar Machine Company also provides complete in-house machining capabilities offering total solutions in this product range for your linear motion requirements. Most importantly, we provide you consistently with the best delivery in the industry on standard and engineered shaft end supports.



**STANDARD, EXTRA RIGID AND CUSTOM SHAFT END SUPPORT**

SHAFT DIA.	STANDARD SHAFT END SUPPORT	EXTRA RIGID SHAFT END SUPPORT	A +/- .001	B	C	D	E +/- .005
1/4	SSB-4	RSB-4	.750	1-5/8	9/16	1-3/16	1.250
3/8	SSB-6	RSB-6	.750	1-5/8	9/16	1-3/16	1.250
1/2	SSB-8	RSB-8	1.000	2	5/8	1-5/8	1.875
5/8	SSB-10	RSB-10	1.000	2-1/2	11/16	1-3/4	1.875
3/4	SSB-12	RSB-12	1.250	2-3/4	3/4	2-1/8	2.000
1	SSB-16	RSB-16	1.500	3-1/4	1	2-9/16	2.500
1-1/4	SSB-20	RSB-20	1.750	4	1-1/8	3	3.000
1-1/2	SSB-24	RSB-24	2.000	4-3/4	1-1/4	3-1/2	3.5000
2	SSB-32	RSB-32	2.500	6	1-1/2	4-1/2	4.500



SHAFT DIA.	F	G	H BOLT	H HOLE	S +/- .001	*W +0.00/-0.01	T
1/4	1/4	11/16	6	5/32	.812	1/4	1/8
3/8	1/4	11/16	6	5/32	.812	1/4	1/8
1/2	1/4	3/4	8	3/16	1.000	1/2	3/16
5/8	5/16	7/8	10	7/32	1.250	1/2	3/16
3/4	5/16	1	10	7/32	1.375	5/8	1/4
1	3/8	1-3/8	1/4	9/32	1.625	5/8	1/4
1-1/4	7/16	1-3/4	5/16	11/32	2.000	5/8	1/4
1/2	1/2	2	5/16	11/32	2.375	3/4	5/16
2	5/8	2-5/8	3/8	13/32	3.000	1	3/8

**NOTES:**

- (\*) THE DIMENSION "W" IS NOT MACHINED (PROVISION CAN BE MADE FOR THIS DIMENSION TO BE MACHINED)
- MANUFACTURED FROM EXTRUDED 6061-T6 ALUMINUM FOR ENGINEERED PERFORMANCE
- CUSTOM SHAFT END SUPPORTS INQUIRES CAN BE FAXED TO:(216)249-8674 OR EMAILED TO: [info@skamar.com](mailto:info@skamar.com)

[HOME](#) | [ABOUT SKAMAR](#) | [CATALOG](#) | [CONTACT SKAMAR](#)

©Copyright 2007 SKAMAR All Rights Reserved

The data and specifications in this publication are believed to be accurate and reliable. However, it is the responsibility of the product user to determine the suitability of Skamar Machine products for a specific application. While defective products will be replaced without charge if promptly returned, no liability is assumed beyond such replacement.